

ABS PUBLICATIONS, SOUTH AUSTRALIA

Cat. No.	Publication	Latest issue	Date of issue
GENERAL			
1202.4	Information Paper : Guidelines for the Development of Community Surveys <i>irr</i>		14 Nov. 1985
1301.4	South Australian Year Book <i>a</i> (\$29.50)		
1302.4	Pocket Year Book of South Australia <i>a</i> (\$8.50)	1995	25 Nov. 1994
1304.4	Local Government Area Statistics <i>irr</i> (\$20.00)	1995	1 May 1995
1306.4	South Australia at a Glance <i>a</i>	1993	30 July 1993
1307.4	South Australian Economic Indicators <i>m</i> (\$12.00)	1995	24 Mar. 1995
1352.4	Sales of Goods and Services by Businesses Involved in Water Related Activity in South Australia <i>irr</i> (\$10.00)	Sept. 1995	1 Sept. 1995
		1992-93 and 1993-94	7 July 1995
POPULATION AND VITAL STATISTICS			
2840.4	Adelaide, a Social Atlas <i>irr</i> (\$45.00)	Census 1991	31 Mar. 1993
2841.4	Aboriginal People in South Australia <i>irr</i> (\$15.00)	Census 1991	11 Feb. 1994
3201.4	Estimated Resident Population in Statistical Local Areas, Preliminary <i>a</i> (\$10.70)	30 June 1992	15 Apr. 1993
3202.4	Estimated Resident Population in Statistical Local Areas <i>irr</i> (\$10.00)	June 1986 to 1991	28 Oct. 1993
3204.4	Estimated Resident Population by Age and Sex in Statistical Local Areas <i>a</i> (\$25.00)	30 June 1994	21 Apr. 1995
3311.4	Demography <i>a</i> (\$30.00)	1993	20 Feb. 1995
3312.4	Deaths <i>a</i> (\$15.00)	1993	6 Dec. 1994
SOCIAL STATISTICS			
4104.4	Aboriginal Births and Deaths, Review of Data Quality and Statistical Summary <i>irr</i> (\$9.50)	1988	16 Mar. 1990
4402.4	Community and Volunteer Work <i>irr</i> (\$7.50)	Oct. 1988	4 Aug. 1989
4509.4	Crime and Safety <i>irr</i> (\$11.50)	Apr. 1995	31 Aug. 1995
PUBLIC FINANCE			
5502.4	Local Government Finance <i>a</i> (\$10.70)	1991-92	21 May 1993
5503.4	State and Local Authorities Finance <i>a</i> (\$13.30)	1991-92	2 July 1993
LABOUR FORCE			
6201.4	Labour Force <i>q</i> (\$16.50)	May 1994	14 July 1994
6204.4	Womens Work <i>irr</i> (\$3.00)	July 1992	23 July 1992
6215.4	Women's Employment Patterns, Adelaide Statistical Division <i>irr</i> (\$10.00)	Nov. 1992	17 Feb. 1993
RURAL			
7111.4	Principal Agricultural Commodities, Preliminary <i>a</i> (\$11.00)	1993-94	12 Aug. 1994
7120.4	Agricultural Statistics : Selected Small Area Data <i>a</i> (\$16.50)	1992-93	11 May 1994
7221.4	Livestock and Livestock Products <i>a</i> (\$16.50)	1992-93	11 Feb. 1994
7330.4	Summary of Crops <i>a</i> (\$22.00)	1992-93	10 Mar. 1994
7503.4	Value of Agricultural Commodities Produced <i>a</i> (\$16.50)	1992-93	19 May 1994
MANUFACTURING			
8221.4	Manufacturing Industry <i>a</i> (\$16.50)	1991-92	31 Oct. 1994
INTERNAL TRADE			
8623.4	Retailing in South Australia <i>irr</i> (\$15.00)	1991-92	21 Jan. 1994
8635.4	Tourist Accommodation <i>q</i> (\$25.00)	June qtr 1995	22 Sept. 1995
BUILDING			
8710.4	Housing and Locational Preferences, Adelaide Statistical Division <i>irr</i> (\$10.00)	1991	23 Aug. 1991
8731.4	Building Approvals <i>m</i> (\$12.00)	July 1995	29 Aug. 1995
8741.4	Dwelling Unit Commencements Reported by Approving Authorities <i>m</i> (\$11.00)	June 1995	6 Sept. 1995
8752.4	Building Activity <i>q</i> (\$12.00)	Mar. qtr 1995	10 July 1995
TRANSPORT			
9203.4	Drivers and Passengers : Travel to Work, Adelaide Statistical Division <i>irr</i> (\$10.00)	Oct. 1993	14 Dec. 1993

SOUTH AUSTRALIAN ECONOMIC INDICATORS

OCTOBER 1995

P.M. GARDNER
Deputy Commonwealth Statistician
and Government Statist

AUSTRALIAN BUREAU OF STATISTICS

CATALOGUE NO. 1307.4

© Commonwealth of Australia 1995

PREFACE

South Australian Economic Indicators is a monthly publication which contains the latest available data at the time of preparation for a range of statistical series that have been identified as indicators of economic activity in this State. In a number of cases the figures presented are preliminary and subject to revision in subsequent issues.

Written and graphic commentary have been included for many of the selected series and analysis has been augmented with the calculation of the percentage change from the previous reference period together with the presentation of comparative Australian data.

Time series information has been included to provide a historical perspective on many of the selected indicators. Future issues may be expanded to include further historical data in response to expressed user needs. This product is under continuous review and any suggestions for enhancement will be welcomed.

More detailed information on each series, including explanatory and technical notes, can be obtained from other Australian Bureau of Statistics publications or alternative data sources. To assist those seeking further information a source publication for each of the series has been documented in the statistical summary.

This issue includes a special article entitled *Retirement and Retirement Intentions*. Future issues will contain further articles on statistical topics which concentrate on longer term trends or other issues pertinent to the South Australian economy.

If you have any inquiries concerning this publication please contact the editor, Brian Moody, telephone (08) 237 7315. All requests for statistical information should be directed to the ABS Information Service, GPO Box 2272 Adelaide SA 5001, telephone (08) 237 7100.

P.M.GARDNER
*Deputy Commonwealth Statistician
and Government Statist*

Australian Bureau of Statistics
Adelaide
September 1995



CONTENTS

	Page
Preface	iii
REVIEW	2
Overview	
State accounts	
International accounts	
Consumption and investment	
Production	
Prices	
Labour force and demography	
Incomes	
Financial markets	
Forward Outlook	
STATISTICAL SUMMARY	14
State accounts	
International accounts	
Consumption and investment	
Production	
Prices	
Labour force and demography	
Incomes	
Financial markets	
FOCUS	16
Retirement and Retirement Intentions	
TIME SERIES	
State accounts - current prices	20
State accounts - average 1989-90 prices	21
Merchandise exports by commodity group	22
Merchandise exports by country	22
Merchandise exports by industry of origin	23
Merchandise imports by commodity group	23
Turnover of retail establishments by industry	24
New motor vehicle registrations by type of vehicle	25
Actual private new capital expenditure by selected industry and type of asset	26
Tourist accommodation	27
Building approvals	27
Building commencements	28
Value of building work done during period	29
Production, livestock and selected commodities	29
Consumer price index, by group	30
Average retail prices of selected consumer items	32
Estimated resident population and components of population change	33
Labour force - numbers	33
Labour force - rates	34
Labour force - area	35
Average weekly earnings of employees	36
Finance commitments	
For more information	40

REVIEW

Overview

- The underlying trend estimate for employed persons in South Australia has been increasing since January 1995 with the August 1995 estimate being 2.2% above the level of 12 months ago.
- The trend unemployment rate for South Australia has declined generally over the past twelve months, having fallen from 10.6% in August 1994 to 9.7% in August 1995.
- The July 1995 retail trade trend estimate for South Australia increased by 0.8% from the June aggregate.
- The South Australian provisional trend estimate for new motor vehicle registrations in July 1995 was 2.2% lower than the June estimate. This was the third month of trend decline following an eight month period of growth.
- In July 1995 the South Australian trend estimate for housing finance commitments increased by 2.3% from the June figure but was 13.3% below the July 1994 estimate.
- Over the twelve month period to the June quarter 1995, prices for established houses in Adelaide rose by 0.5% while there was an increase of 2.0% for project homes.
- The July 1995 trend estimate for dwelling approvals in South Australia was 7.1% below the June estimate and 49.2% lower than in July 1994.
- In July 1995 the total value of overseas exports of commodities produced in South Australia fell 10.2% from the previous month, but was 5.8% above the July 1994 level. Merchandise imports into South Australia in July 1995 rose 4.3% from the previous month, and were 12.6% higher than in July 1994.

State Accounts

Gross State Product (GSP)

Note: Care should be taken in interpreting the movements in trend GSP (constant prices). Trend GSP (constant prices) is an *experimental* series with estimates derived indirectly by calculating a deflator from the expenditure components. The original series may also be deficient as a result of both conceptual issues and the quality or lack of appropriate State data in some instances.

Gross State Product (GSP) trend estimates in 1989-90 prices showed little change (-0.1%) in the March quarter 1995 in contrast to the strong growth in final demand (up 1.4%). This was the fourth consecutive quarter of negative growth in GSP, and over the year GSP has edged down by 0.8%. South Australia was the only State to record negative growth for both the March quarter and for the twelve month period to March 1995. (The national averages were 0.5% and 4.0% respectively.)

Expressed in current prices, the rate of growth in GSP trend has also weakened with a rise of 0.3% in the March quarter and an increase of 2.8% over the year. (The national averages were 1.2% and 5.8% respectively.)

A major contributing factor in the weakening rate of growth in GSP has been wages, salaries and supplements which grew by 0.1% for the second consecutive quarter, considerably below the increases experienced in the preceding nine quarters. Wages, salaries and supplements grew 1.7% for the twelve months ended March 1995 compared with the national average of 6.8%.

State Final Demand

In contrast to the decline in GSP, growth in State Final Demand (trend in 1989-90 prices) grew strongly by 1.4% in the March quarter 1995. At 8.5% South Australia had the highest growth rate of the States and Territories over the twelve months to March 1995. (The national average was 5.8%).

A major contributor to the annual growth in State Final Demand was private gross fixed capital expenditure on equipment, which more than doubled over the year.

Private final consumption expenditure remained strong with a 1.3% increase in the March quarter and 5.0% for the 12 months ended March (this was in line with the national average of 5.1%). In contrast, government final consumption expenditure continued to decline, falling 3.4% in the March quarter to a level 4.5% below that of a year ago.

International Accounts

Exports

The total value of overseas exports of commodities produced in South Australia fell to \$291.0 million in July 1995. This was a decrease of 10.2% from the previous month, but 5.8% greater than the value in July 1994. The fall in value was largely attributable to a \$24.8 million (63.8%) fall in the value of exports of petroleum and petroleum products, but was accentuated by falls in exports of meat and meat preparations (\$8.4 million), metals and metal manufactures (\$6.3 million), and road vehicles, parts and accessories (\$6.8 million). These falls were partly offset by rises in the value of exports of fish and crustaceans (\$7.3 million, a rise of 54.9%), wine (\$2.5 million, 11.5%) and wool and sheepskins (\$1.7 million, 9.1%).

Japan was again the leading destination for South Australian exports, taking 17.1% of the total value. However, this share was down from 20.4% in the previous month, following a fall in the value of goods exported to Japan of \$16.3 million. The region which had the sharpest reduction in value of exports from South Australia in July was the ASEAN group, which fell by \$17.5 million (34.0%). However, July 1995 exports to ASEAN countries were \$9.6 million (39.5%) higher than in July 1994.

Imports

In July 1995 merchandise to the value of \$286.4 million was imported into Australia with South Australia designated as the State of final destination. This was an increase of 4.3% from the previous month, and 12.6% higher than the value of imports in July 1994.

The leading commodity groups were machinery (20.3% of the total), road vehicles, parts and accessories (18.6%) and petroleum and petroleum products (17.8%). While the value of imports of machinery and road vehicles and parts showed a decrease over the previous month, imports of petroleum rose by \$26.7 million (109.6%).

MERCHANDISE EXPORTS AND IMPORTS

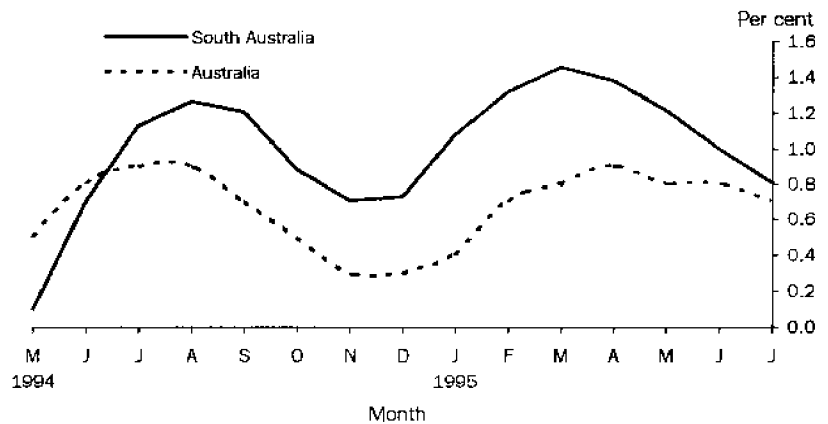


Consumption and Investment

Retail Turnover

The retail trade trend estimate indicates that retail sales in South Australia increased by 0.8% in July 1995 compared with an Australian rise of 0.7%. Increased turnover in the hospitality and services, household good retailing, and department stores groups has been largely responsible for the strong growth during 1995.

RETAIL TURNOVER PERCENTAGE CHANGE FROM PREVIOUS MONTH Trend Estimates

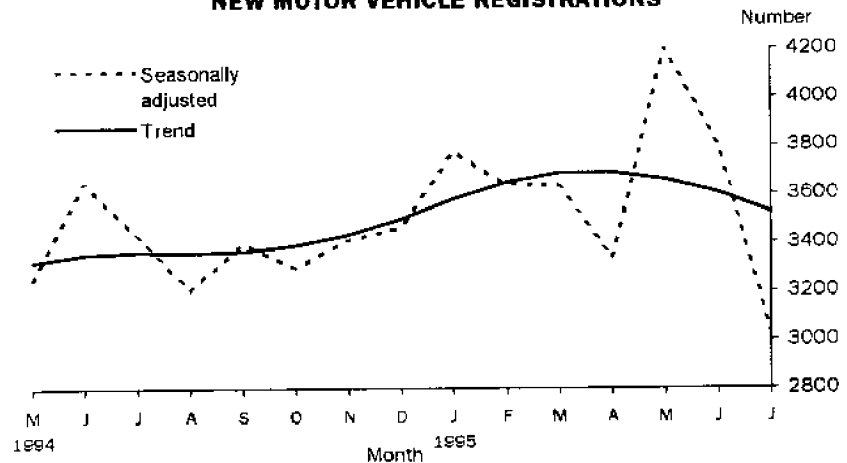


In seasonally adjusted terms South Australian retail trade in July 1995 increased 0.3% from June 1995. In original terms, South Australian retail turnover was \$729.6 million for July 1995, an increase of 1.7% from June.

New Motor Vehicle Registrations

The South Australian provisional trend estimate for new motor vehicle registrations in July 1995 was 2.2% lower than the June estimate. This was the third month of trend decline following an eight month period of growth. The seasonally adjusted estimate for July 1995 decreased by 20.4% from June 1995 and 1.8% from July 1994.

NEW MOTOR VEHICLE REGISTRATIONS



In original terms there were 2,992 new motor vehicles registered in July 1995, a decrease of 28.5% from June 1995 and 11.8% below the July 1994 total. For new passenger vehicles only, the leading makes registered in July 1995 were Ford (690 vehicles), Holden (663), Toyota (373), Mitsubishi (310) and Mazda (82).

Tourist Accommodation

When the June quarter 1995 is compared with the June quarter 1994, rooms available in hotels, motels and guesthouses in South Australia increased slightly from 10,597 to 10,605 while bed spaces increased from 29,898 to 30,013. Overall the room occupancy rate rose from 47.4% to 50.0%, ranging from 37.2% for one star rated establishments to 69.1% for four star rated establishments. Regional room occupancy rates ranged from 57.8% in the Adelaide Statistical Division to 31.7% in the Eyre Statistical Division. The room occupancy rate of 50.0% was the highest June quarter result since 50.8% in 1989, but well below the 56.2% recorded in 1986. Takings from accommodation increased by 10.0% from \$32.5 million to \$35.8 million with average takings per room night occupied rising from \$71 to \$74.

Private New Capital Expenditure

The trend estimate (in seasonally adjusted current price terms) for private new capital expenditure in South Australia for the March quarter 1995 was \$563 million. The rise of 3.0% from the previous quarter followed rises of 9.5%, 17.7% and 15.2% in the December, September and June 1994 quarters respectively and is an indicator of strong growth over this period. However, the last quarter has seen a flattening in the series, and the South Australian total for the quarter represented only 6.4% of the national figure.

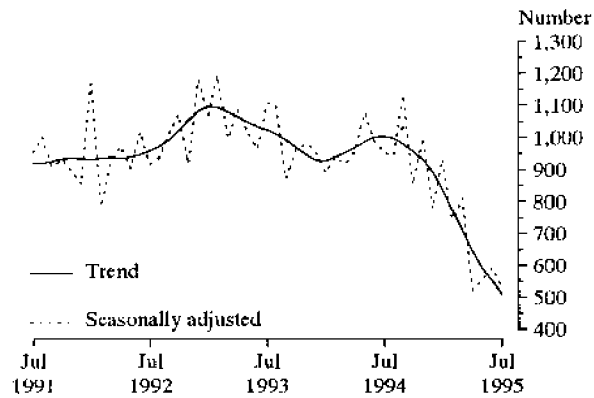
Private new capital expenditure in original terms for the March quarter 1995 was \$483 million, a decrease of 24.0% from the December 1994 quarter. Buildings and structures accounted for \$85 million, and equipment, plant and machinery \$399 million.

Production

Dwelling Approvals

The July 1995 trend estimate for dwelling approvals in South Australia was 510, a fall of 7.1% from June and 49.2% below the July 1994 total. In original terms, the number of dwelling units approved in July 1995 was 576, a decrease of 10.8% from the previous month.

DWELLING UNITS APPROVED



The national trend estimate for the total number of dwelling units approved in July 1995 (11,339) was 2.2% lower than the estimate for June and 32.3% below the July 1994 estimate. In original terms, South Australia accounted for 5.1% of the total dwellings approved in Australia during July 1995.

Dwelling Commencements

From the Building Activity Survey, it was estimated that 2,064 dwelling units were commenced in South Australia during the March quarter 1995, the lowest since the December quarter 1987. The latest figure represented a fall of 770 dwelling units (27.2%) from the previous quarter and can be compared with a 22.9% fall nationally. The latest figure for South Australia was 19.0% below the total for the March quarter 1994 while the national decrease over the twelve month period was 13.6%.

Value of Non-residential Building Approvals

In July 1995 the value of non-residential projects approved in South Australia was \$36.3 million. This amounted to 4.7% of the total value of Australian non-residential building approvals (\$772.9 million) in this month.

Expressed in average 1989-90 prices the value of non-residential building approvals in South Australia for the June quarter 1995 was \$157.8 million, a 34.0% increase from the March quarter.

Value of Total Building Activity

The total value of *building work commenced* during the March quarter 1995 fell by \$73.8 million or 20.9% (16.4% nationally) from the previous quarter to \$278.6 million, the lowest for 8 years. Most of the decrease was accounted for by a fall of \$60.5 million in private sector residential commencements. Building commencements in South Australia comprised 4.6% of the national total in the March quarter.

The total value of *building work done* during the March quarter 1995 was \$314.3 million, also the lowest for 8 years. It represents a decline of \$70.4 million (18.3%) from the previous quarter and compares with a 17.6% fall nationally. Compared with the March quarter 1994, the latest figure for South Australia represents a 5.2% decrease in the value of total building work done, while the corresponding national movement was a 6.8% increase.

Building work yet to be done was valued at \$280.3 million at the end of March 1995, a fall of 8.5% from the previous quarter and the lowest since the September quarter 1984. Compared to a year earlier, work yet to be done was down 17.0% in South Australia but up 6.8% nationally. Work yet to be done in South Australia comprised only 3.1% of the national figure in the March quarter 1995.

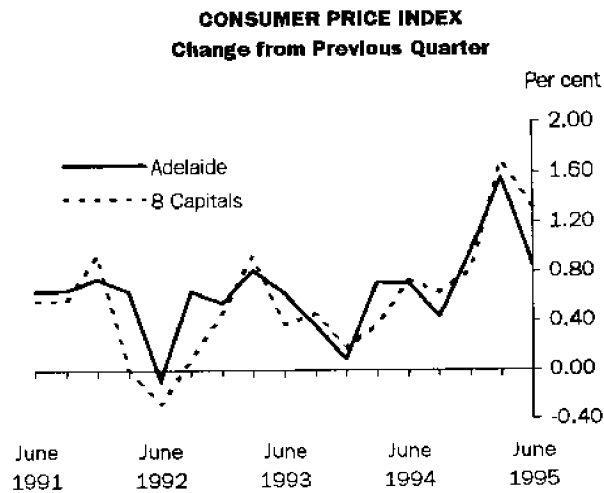
Value of Engineering Construction

In the March quarter 1995, engineering construction work done in South Australia fell by 8.4% (8.7% nationally) to \$156.8 million. The latest figure for South Australia was 13.8% below the level of a year earlier, and compared with a 1.4% decrease nationally.

Prices

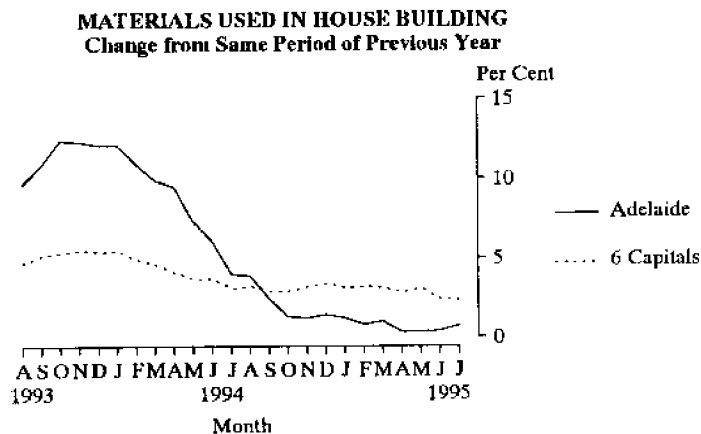
Consumer Price Index

In the June quarter 1995 the all groups Consumer Price Index increased by 1.3% nationally and this contributed to an annual increase of 4.5%. For Adelaide, the quarterly movement was 0.8% while the annual increase was 3.8%. Both of these movements were the lowest recorded of the eight capital cities.



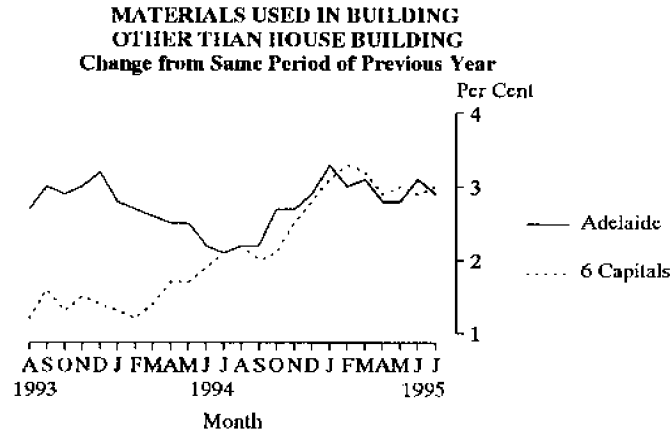
House Building Materials

In July 1995 the Price Index of Materials Used in House Building for Adelaide recorded a fall of 0.3% from the previous month. All other cities recorded a rise or no movement. Hobart recorded a rise of 0.8%, with Sydney and Brisbane showing no movement. At 0.7%, Adelaide recorded the smallest rise over the twelve months from July 1994 with the largest rise occurring in Hobart (5.2%), followed by Perth (3.5%) and Sydney (2.9%).



Non-house Building Materials

In July 1995 the Price Index for Materials Used in Building Other than House Building in Adelaide rose 0.2% from the previous month. This was the lowest rise of the Capital cities. The highest rise from the previous month (0.6%) was recorded by both Melbourne and Perth, followed by Sydney (0.5%). Over the twelve months to July 1995 the largest increase was recorded in Perth (3.8%), followed by Brisbane (3.6%) and Hobart (3.5%). Adelaide recorded a rise of 2.9% over the twelve months with Melbourne recording the smallest rise (2.4%).



House Prices

Between the March and June quarters 1995 the price index of established houses in Australia fell by 0.7% while project home prices increased by 0.6%. Over the same period, prices of established houses in Adelaide decreased by 0.4%, while project home prices rose by 0.2%.

Nationally, over the twelve month period from the June quarter 1994, prices for established houses rose by 1.4% while the increase for project homes was 1.7%. In Adelaide there was an price increase of 0.5% for established houses and a rise of 2.0% for project homes.

Labour Force and Demography

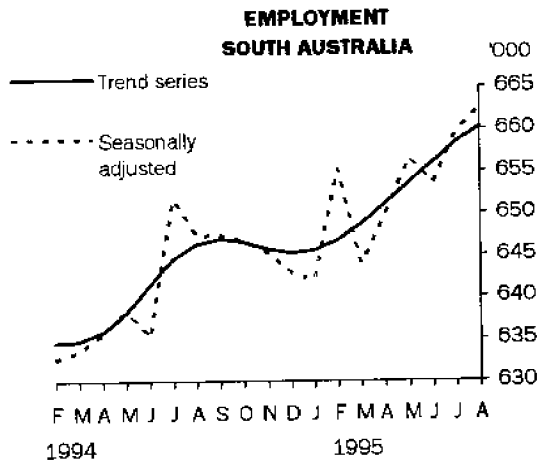
Population

At 31 December 1994 the estimated resident population of South Australia was 1,471,871, an increase of 0.06% (916) over the September quarter, and 0.35% higher than December 1993. This was well below the national annual growth rate of 1.1%. The low growth rate in this State was mainly attributable to a net outflow of 4,741 persons in interstate migration over the twelve month period.

Employment

The underlying trend estimate for employed persons in South Australia has been increasing since January 1995. The August 1995 estimate (660,200) was 2.2% higher than the level of 12 months ago.

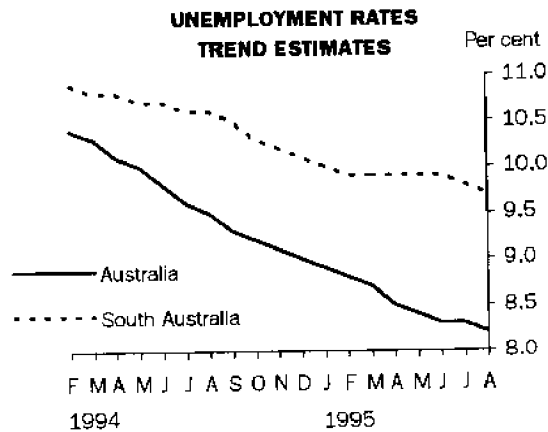
The underlying trend estimate of employed persons in Australia has been increasing since February 1993, reaching 8,282,900 in August 1995. Over the past 12 months, full-time and part-time employment have increased by 3.5% and 6.0% respectively.



Unemployment

The trend unemployment rate for South Australia has declined generally over the past twelve months, having fallen from 10.6% in August 1994 to 9.7% in August 1995. Over this period, the trend unemployment rate for males decreased from 10.9% to 10.8%, while the rate for females fell from 10.1% to 8.3%.

The provisional trend estimate unemployment rate for Australia was 8.2% in August 1995. This continued the general downward movement evident since January 1993.



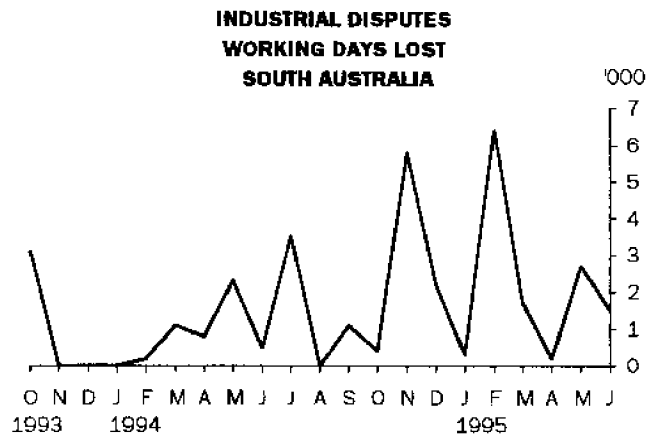
Overtime

The proportion of employees who worked overtime in South Australia in May 1995 was 16.7% compared with 16.3% in February 1995.

Industrial Disputes

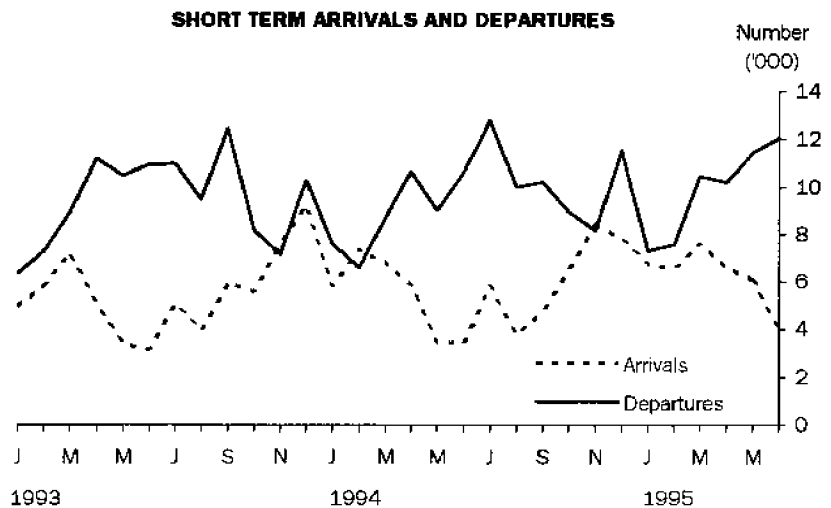
There were 1,500 working days lost through industrial disputes in South Australia during June 1995. At 3.8% of the Australian total (39,000 working days), South Australia experienced a relatively low level of disputation.

In the twelve months to June 1995, 18,000 working days were lost through industrial disputation in South Australia.



Short-term Overseas Visitor Arrivals

There were 4,000 short-term overseas visitor arrivals to South Australia in June 1995. This was a fall of 34.4% from the number of visitors in the previous month but was 17.6% higher than the number of arrivals in June 1994.



Short-term Resident Departures

Short term departures of South Australian residents in June 1995 totalled 12,000. This was 5.3% higher than the May figure and 13.2% higher than the number of short term resident departures in June 1994.

Incomes

Average Weekly Earnings

Average weekly ordinary time earnings of full-time adult employees in South Australia decreased from \$619.90 in February 1995 to \$611.70 in May 1995. Male full-time ordinary time earnings fell from \$648.40 in February 1995 to \$635.10 in May 1995. Over the same period the comparable level for females increased from \$560.80 to \$563.90.

Between February 1995 and May 1995, average weekly total earnings of all employees in South Australia decreased from \$527.90 to \$513.30.

The trend estimate for average weekly ordinary time earnings of full-time adult employees in South Australia rose from \$611.10 in February 1995 to \$616.70 in May 1995. Male full-time ordinary time earnings increased from \$636.60 in February 1995 to \$643.40 in May 1995. Over the same period, the comparable level for females increased from \$560.80 to \$563.40.

Between February 1995 and May 1995, the trend estimate of average weekly total earnings of all employees in South Australia increased from \$515.50 to \$518.00.

Since it is an average of earnings across all employees, changes in average weekly earnings may occur through changes in employment as well as changes in pay levels.

Award Rates of Pay

Over the 12 months to July 1995, the weekly award rates of pay index for full-time employees in South Australia increased by 1.2%.

For full-time adult male employees, the largest annual movement of the index occurred in the recreation, personal and other services industry (an increase of 2.5% since July 1994).

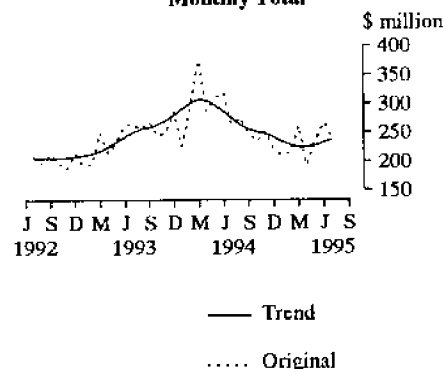
For full-time adult female employees, the largest annual movement of the index occurred in the recreation, personal and other services industry (an increase of 2.1% since July 1994).

Financial Markets

Housing Finance

In July 1995 total housing finance commitments (original figures including alterations and additions) in South Australia fell by \$27.6 million (9.5%) from the previous month to \$261.5 million. This was \$22.8 million (8.0%) lower than the July 1994 total.

SECURED HOUSING FINANCE COMMITMENTS
TO INDIVIDUALS (ALL LENDERS)
(Excluding Alterations and Additions)
Monthly Total



The largest category, finance commitments for the purchase of established dwellings was down by \$18.7 million (10.9%) to \$153.5 million from June. The total for finance commitments for the construction of dwellings was down marginally by \$1.1 million to \$30.0 million. Commitments for the purchase of newly erected dwellings were down by \$4.8 million (25.5%) to \$14.1 million from the year's peak of \$18.9 million in June.

Refinancing accounted for 17.0% and alterations and additions were 7.4% of total new lending commitments.

The July 1995 trend estimate for total value of commitments (excluding alterations and additions) increased marginally by \$5.3 million to \$237.1 million from June but was down 36.4 million (13.3%) from July 1994.

Personal Finance

In July 1995 personal finance commitments in South Australia decreased by \$40.8 million (17.5%) to \$192.7 million from the record high figure recorded in the previous month. The fall was mainly attributable to the decrease in unsecured commitments under revolving credit facilities which had almost doubled in June.

Sales of used motor vehicles and station wagons, the largest category under fixed loan commitments, decreased by \$3.0 million (7.2%) to \$38.6 million from June and compared with \$36.5 million in July 1994. Sales of new motor vehicles and station wagons decreased by \$1.9 million (13.3%) to \$12.1 million and was \$0.6 million (4.4%) lower than in July 1994.

Total personal finance commitments under fixed loan commitments decreased by \$11.7 million (9.0%) to \$118.9 million in July 1995 marginally above the \$116.3 million of July 1994. Total personal finance commitments under revolving credit commitments decreased by \$29.1 million (28.2%) to \$73.8 million but this was the second highest monthly figure in the past eight years.

Commercial Finance

In June 1995 total commercial finance commitments in South Australia decreased marginally from the May figure by \$32.1 million (5.4%) to \$556.7 million, \$38.6 million (6.5%) below the corresponding month in 1994. Finance commitments under fixed loan facilities increased while commitments under revolving credit facilities decreased.

Commercial finance commitments under fixed loan facilities increased by \$40.5 million (13.2%) to \$346.9 million, the highest June figure since 1991. Large increases were recorded in the categories of property and business services, recreation, personal and other services, and other industries, while community services fell back from the high May figure.

Commitments under revolving credit facilities fell by \$72.6 million (25.7%) to \$209.8 million. Agriculture, forestry, fishing and hunting, wholesale trade and other industries fell back following substantial increases in May. Manufacturing, construction, retail trade and property and business services had considerable increases during June.

Lease Finance

In July 1995 the value of goods under new finance lease commitments in South Australia decreased by \$4.3 million (13.6%) from the June figure to \$27.4 million but was \$1.0 million (3.6%) above July 1994.

Lease commitments for new motor vehicles and station wagons not subject to depreciation, the largest category, decreased by \$1.4 million (19.3%) to \$5.6 million (27.7% below July 1994). Used motor vehicles and station wagons not subject to depreciation decreased by \$0.9 million (24.9%) to \$2.7 million. New motor vehicles subject to depreciation fell by \$1.0 million to a total of \$2.6 million from the highest June figure since 1991.

New finance lease commitments for office machines doubled in July to reach \$2.0 million while the figures for new light trucks and used heavy trucks had big falls following the high June aggregates.

Forward Outlook

Composite Leading Indicator

The Composite Leading Indicator (CLI) is a single time series produced by aggregating eight individual economic indicators, and has been developed by the ABS as an experimental series to supplement existing forms of economic analysis and modelling.

The CLI summarises the early signals contained in a selection of economic indicators and is designed to help in the detection of turning points between successive expansions and contractions of economic activity but does not attempt to forecast the level of economic activity.

The main features of the Australian June quarter 1995 data were:

- confirmation of the narrowing in the deviation of GDP(A) from its long-term trend (predicted by the December 1994 CLI);
- a continuation of the downward movement in the CLI evident since the September quarter 1994 peak, and the acceleration in this downward movement (-0.28% in the December quarter 1994, -0.62% in the March quarter 1995 and -0.72% in the June quarter 1995).

The quarterly data are released in more detail in the *Australian Economic Indicators* (1350.0). The CLI was the topic of the Focus article in the September 1993 edition of *South Australian Economic Indicators* (1307.4).

Australian Business Expectations

Surveys of business expectations have been a feature of the economic intelligence available to decision makers for a number of years. The main output from these surveys has been a qualitative indicator which provides the net proportion of businesses predicting a rise or fall in future business conditions. Further details about these surveys which are conducted quarterly by the ABS are available in *Australian Business Expectations* (1250.0), the September 1994 edition of *Australian Economic Indicators* (1350.0) and the May 1994 edition of *South Australian Economic Indicators* (1307.4).

AUSTRALIAN BUSINESS EXPECTATIONS SOUTH AUSTRALIA AND AUSTRALIA SALES OF GOODS AND SERVICES EXPECTED PERCENTAGE AGGREGATE CHANGE

Reference Period	Short term(a)		Medium term(b)	
	South Australia	Australia	South Australia	Australia
1994	2.2	2.3	1.8	4.1
March quarter	2.0	1.9	3.1	3.9
June quarter	2.0	1.9	4.1	3.3
September quarter	4.5	2.3	3.2	4.1
December quarter	-0.1	-0.5	2.8	3.3
1995				
March quarter	1.8	1.4	1.1	3.0
June quarter	0.2	1.3	0.8	2.3

(a) Short term is the following quarter. (b) Medium term is the same quarter in the following year.

Short term

Businesses in South Australia expected a rise of 0.2% in sales in the September quarter compared with the June quarter 1995 while the national expectation was a 1.3% increase.

Medium term

Businesses in South Australia expected a lower growth in sales (0.8%) than the national expectation of 2.3% for the June quarter 1996 compared with the June quarter 1995.

STATISTICAL SUMMARY

Indicator	SOUTH AUSTRALIA					AUSTRALIA				Source index
	Reference period	No.	% change		No.	% change		SA as a % of Australia		
			Over pre-ceeding period	Over same period previous year		Over pre-ceeding period	Over same period previous year			
State Accounts										
Gross domestic product (I)										
Current prices	\$m	Mar. qtr 95	8,026	-10.1	2.2	109,448	-8.2	5.9	7.3	1
1989-90 prices trend	\$m	Mar. qtr 95	7,230	-0.1	-0.8	104,187	0.5	4.0	6.9	1
Wages, salaries and supplements										
*Current prices trend	\$m	Mar. qtr 95	4,090	0.1	1.7	56,423	1.8	6.8	7.2	1
Private final consumption expenditure										
Current prices	\$m	Mar. qtr 95	5,245	-6.8	7.6	68,115	-7.6	7.1	7.7	1
1989-90 prices trend	\$m	Mar. qtr 95	4,711	1.3	5.0	62,501	1.0	5.1	7.5	1
Private gross fixed capital expenditure										
1989-90 prices trend	\$m	Mar. qtr 95	1,286	5.8	46.0	18,273	0.3	12.8	7.0	1
International Accounts										
Exports (excluding re-exports)	\$m	July 95	291.0	-10.2	5.8	5,966.7	9.9	15.9	4.9	2
Imports	\$m	July 95	286.4	4.3	12.6	6,872.8	4.6	19.0	4.2	2
Consumption and Investment										
Retail turnover										
Current prices original	\$m	July 95	729.6	1.7	12.8	9,474.0	1.6	8.3	7.7	3
Current prices trend	\$m	July 95	764.2	0.8	13.9	9,767.5	0.7	8.0	7.8	3
1989-90 prices original	\$m	Jun. qtr 95	1,871.5	6.3	12.7	24,205.6	4.9	6.3	7.7	3
New motor vehicle registrations										
Original	No.	July 95	2,992	-28.5	-11.8	52,915	-11.5	1.9	5.7	4
Trend	No.	July 95	3,523	-2.3	4.8	55,042	-0.4	7.9	6.4	4
Takings, licensed hotels, motels and guest houses with facilities	\$'000	Jun. qtr 95	35,802	-5.5	10.0	n.y.a.	n.y.a.	n.y.a.	n.y.a.	5
Private new capital expenditure										
Current prices original	\$m	Mar. qtr 95	483.3	-24.0	28.8	7,967.3	-14.6	25.5	6.1	6
Current prices trend	\$m	Mar. qtr 95	562.6	3.0	52.9	8,775.3	2.8	20.3	6.4	6
Private new capital expenditure										
Expected private new capital expenditure	\$m	1993-94	1,491	..	-2.0	28,758	..	11.3	5.2	6
Expected private new capital expenditure	\$m	6 Months to June 95	842	..	-2.0	16,983	..	22.3	5.0	6
Expected private new capital expenditure	\$m	1994-95	1,953	..	27.7	34,234	..	24.4	5.7	6
Production										
Dwelling unit approvals										
Original	No.	July 95	576	-10.8	-40.6	11,253	-7.8	-27.1	5.1	7
Trend	No.	July 95	510	-7.1	-49.2	11,339	-2.2	-32.3	4.5	7
Dwelling unit commencements	No.	Mar. qtr 95	2,064	-27.2	-19.0	35,271	-22.9	-13.6	5.9	8,8a
Value of non-residential building approvals	\$m	July 95	36.3	-24.2	8.7	772.9	-26.4	30.2	4.7	7
Value of total building activity										
Commenced	\$m	Mar. qtr 95	278.6	-20.9	-11.7	6,059.2	-16.4	-4.6	4.6	8
Work done	\$m	Mar. qtr 95	314.3	-18.3	-5.2	6,254.5	-17.6	6.8	5.0	8
Work yet to be done	\$m	Mar. qtr 95	280.3	-8.5	-17.0	9,011.2	1.0	6.8	3.1	8
Value of engineering construction work done	\$m	Mar. qtr 95	156.8	-8.4	-13.8	3,019.3	-8.7	-1.4	5.2	9
Manufacturing production										
Electricity (SA and NT)	mill. kWh	July 95	878	7.0	-6.1	15,399	6.4	5.5	5.7	10
Cheese	tonnes	June 95	796	-52.1	-46.8	8,135	-40.6	-9.6	9.8	10
Red meat	tonnes	July 95	9,485	-35.3	-24.2	195,201	-13.8	-10.7	4.9	11
Mineral exploration expenditure (other than for petroleum)										
	\$m	Jun. qtr 95	6.6	43.5	13.8	244.6	28.5	10.9	2.7	12

Indicator	SOUTH AUSTRALIA						AUSTRALIA				SA as a % of Australia	Source index
	Reference period	No.	% change			% change						
			Over pre- ceding period	Over same previous year		Over pre- ceding period	Over same previous year					
				Over same previous year	Over same previous year		Over same previous year	Over same previous year				
Prices												
CPI - All groups	1989-90=100	Jun. qtr 95	118.8	0.8	3.8	116.2	1.3	4.5	..	13		
Price index of materials used in house building	1985-86=100	July 95	154.0	-0.3	0.7	158.1	0.1	2.3	..	14		
Price index of materials used in building other than houses	1989-90=100	July 95	112.3	0.2	2.9	112.4	0.5	3.0	..	15		
Established house price index	1989-90=100	Jun. qtr 95	111.2	-0.4	0.5	112.4	-0.7	1.4	..	16		
Price index of project homes	1989-90=100	Jun. qtr 95	114.6	0.2	2.0	108.7	0.6	1.7	..	16		
Labour Force and Demography												
Population (resident at end qtr)	'000	Dec. qtr 94	1,471.9	0.1	0.4	17,938.5	0.2	1.1	8.2	17		
Labour force												
Original	'000	Aug. 95	724.7	0.2	1.3	8,939.6	-0.7	2.9	8.1	18		
Trend	'000	Aug. 95	731.1	0.2	1.2	9,027.5	0.1	2.7	8.1	18		
Employed persons												
Original	'000	Aug. 95	657.3	0.0	2.4	8,217.7	-0.9	4.2	8.0	18		
Trend	'000	Aug. 95	660.2	0.3	2.2	8,282.9	0.1	4.1	8.0	18		
Participation rate												
Original (a)	%	Aug. 95	61.9	0.1	0.6	63.1	-0.6	0.9	..	18		
Trend (a)	%	Aug. 95	62.4	0.1	0.5	63.8	0.0	0.8	..	18		
Unemployment rate												
Original (a)	%	Aug. 95	9.3	0.1	-0.9	8.1	0.2	-1.1	..	18		
Trend (a)	%	Aug. 95	9.7	-0.1	-0.9	8.2	-0.1	-1.3	..	18		
Job vacancies	'000	May qtr 95	3.3	32.0	37.5	53.7	-6.1	8.7	6.1	19		
Average weekly overtime per employee	hours	May qtr 95	1.2	6.4	19.4	1.2	-1.7	-8.5	..	19		
Industrial disputes	'000 working days lost	June 95	1.5	-44.4	-57.1	39.0	-56.0	8.9	3.8	20		
Short-term overseas visitors												
arrivals	No.	June 95	4,000	-34.4	17.6	261,400	-5.9	13.2	1.5	21		
Short-term resident departures	No.	June 95	12,000	5.3	13.2	229,400	13.7	0.3	5.2	21		
Incomes												
Average weekly earnings (full-time adults; ordinary time)												
Original	\$	May qtr 95	611.70	-1.3	2.0	647.30	1.3	4.8	..	22		
Trend	\$	May qtr 95	616.70	0.9	3.0	646.10	1.3	4.9	..	22		
Award rates of pay index (full-time adults, weekly)	Jun.1985=100	July 95	145.7	0.1	1.2	143.5	0.1	1.1	..	23		
Financial markets												
Secured housing finance	\$m	July 95	261.5	-9.5	-8.0	3,812.6	-5.6	-9.8	6.9	24		
Finance commitments												
Personal	\$m	July 95	192.7	-17.5	18.1	2,799.4	-9.5	21.1	6.9	25		
Commercial	\$m	June 95	556.7	-5.4	-6.5	12,022.8	25.3	1.2	4.6	25		
Lease	\$m	July 95	27.4	-13.6	3.6	611.3	-25.7	2.0	4.5	25		
Interest rates												
Banks new housing loans (a)	%	Aug. 95	10.50	0.0	1.8	..	26		
Small overdraft rate (a)												
Minimum	%	Aug. 95	10.90	0.0	1.7	..	26		
Maximum	%	Aug. 95	11.25	0.0	1.8	..	26		
Change is shown in percentage points.												

FOCUS

Retirement and Retirement Intentions

Introduction

A survey of persons aged 45 and over was conducted by the Australian Bureau of Statistics (ABS) in November 1994 as a supplement to the monthly Labour Force Survey. The survey focused on the characteristics of persons who had retired from full-time work, including age at retirement, main source of income and retirement scheme membership. Persons aged 45 and over who intended to retire from full-time work were asked about the age at which they intended to retire; their expected main source of income at retirement; retirement scheme membership and superannuation cover. Similar surveys had been undertaken in 1989 and 1992.

Overview

In November 1994 there were an estimated 5,771,500 persons aged 45 and over usually resident in Australia. Of these persons, 3,146,100 (55%) had retired from full-time work, 2,107,000 (37%) had not retired from full-time work, and 518,400 (9%) had never worked full-time and did not intend to work full-time. In South Australia there were 505,940 in this age group of whom 57% had retired, 33% had not retired and 10% had never worked full-time and did not intend to work full-time.

Nationally, of those who had not retired, 1,898,500 (90%) intended to retire from full-time work and 208,500 did not intend to retire from full-time work. The proportion of South Australians who intended to retire was slightly higher at 92%.

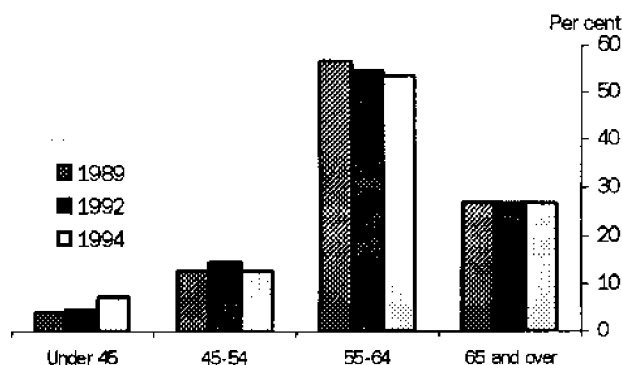
Age at retirement

In November 1994, of the 1,269,200 males aged 45 and over who had retired from full-time work:

- 26% had retired aged 65 and over;
- 52% had retired aged 55 to 64;
- 15% had retired aged 45 to 54;
- 7% had retired aged less than 45.

The percentages were similar for South Australia but a slightly greater proportion (54%) had retired aged 55 to 64 and a smaller proportion (13%) had retired aged 45 to 54.

SOUTH AUSTRALIAN MALES WHO HAD RETIRED FROM FULL-TIME WORK: AGE AT RETIREMENT

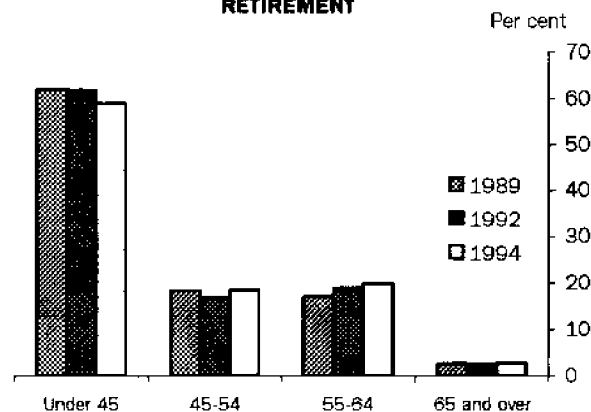


In contrast, of the 1,876,900 females aged 45 and over who had retired from full-time work:

- 3% had retired aged 65 and over;
- 21% had retired aged 55 to 64;
- 20% had retired aged 45 to 54;
- 57% had retired aged less than 45.

Again the South Australian percentages were similar but there were smaller proportions in the 55 to 64 (20%) and 45 to 54 (18%) categories and a higher proportion (59%) had retired before reaching 45 years.

SOUTH AUSTRALIAN FEMALES WHO HAD RETIRED FROM FULL-TIME WORK: AGE AT RETIREMENT



Of the 1,061,100 females who had retired younger than 45 years of age, 37% (397,700) reported that they had ceased their last full-time job to get married. Of these, 46% were aged 70 and over. The proportion of female retirees who had ceased their last full-time job to get married increased with age, from 15% of those aged 45 to 49, to 63% of those aged 70 and over. A further 26% of females who had retired before reaching 45 years of age had left their last full-time job to have children. For South Australian women who had retired younger than 45 years a higher proportion (41%) had ceased their last full-time job to get married. Other percentages for South Australia were similar to the national figures.

Of the 91,900 males who had retired before the age of 45, 66% (60,500) reported that they ceased their last full-time job because of their own ill-health or injury. The South Australian proportion was similar (67%).

Early retirement

In the survey, persons who retired aged 45 and over, but before the standard retirement ages of 60 years for females and 65 years for males, were asked to give the main reason they decided not to work full-time until that standard age. The proportions of males and females who retired before the standard ages were similar. Of the 1,177,300 males who were aged 45 and over when they retired, 847,800 (72%) had retired early, compared with 577,400 (71%) of females. In South Australia the proportion was 71% for both genders.

The main reasons for retiring early were similar for males and females, although the proportions differed. The most common reason given for retiring early was 'own ill-health or injury' (48% of males and 25% of females), followed by 'decided not to work any more, more leisure time' (18% of males and 25% of females). For males, a further 7% gave their main reason for retiring early as 'retrenched, early retirement package, reached compulsory retirement age in that job', whereas for females, the next most frequently reported reason for retiring early was 'family reasons' (20%). The South Australian proportions were generally in line with the national experience but a lower proportion of males (45%) gave the reason 'own ill-health or injury' and a greater proportion (21%) stated 'decided not to work any more, more leisure time'.

Compulsory retirement

In November 1994 there were 419,100 Australian retirees whose reason for leaving their last full-time job was that they had reached compulsory retirement age in that job. Of these, about one-third (138,700) would have liked to continue working full-time. A similar proportion of the 37,100 South Australian retirees also would have liked to continue working full-time.

Main source of income at retirement

The main source of income at retirement varied according to sex. Males who had retired from full-time work aged 45 years and over reported their main source of income as follows:

- invalid, age or sole parent's pension (29%);
- superannuation, life assurance, other retirement schemes (16%);
- investments, interest, stocks, debentures etc. (11%);
- sickness, special and other benefits (11%).

The percentages were generally of the same order for South Australian males but a higher proportion (14%) obtained most of their retirement income from sickness, special and other benefits.

For females who retired aged 45 years and over the main sources of income most frequently reported were:

- someone else's income, pension or superannuation (38%);
- invalid, age, sole parent or widow's pension (26%);
- part-time work (7%).

Again the percentages were similar for South Australia, although a smaller proportion (35%) were relying on someone else's income, pension or superannuation.

These results can be compared with the expectations of persons who intend to retire. In November 1994 there were 1,320,700 males aged 45 and over and 577,800 females aged 45 and over who intended to retire. The respective totals for South Australia were 108,550 and 45,180.

For males in this group, the main source of income at retirement was expected to be:

- superannuation (32%);
- invalid, age or sole parent (21%);

- investments, interest, stocks, debentures, etc. (10%).

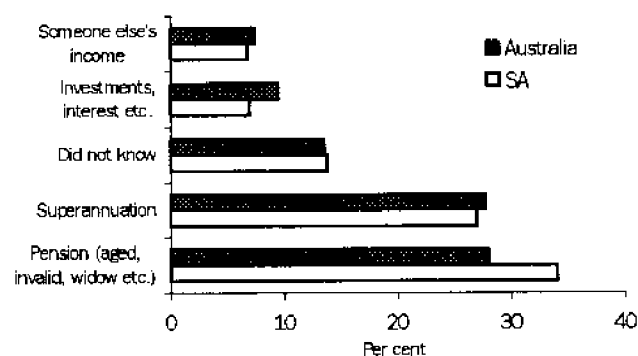
Expectations for South Australian males varied somewhat from these percentages in that 31% anticipated that their main source of income would be superannuation; 33%, invalid, age or sole parent's pension; and only 7%, investments, interest, stocks, debentures, etc.

Females aged 45 and over who intended to retire expected their main source of income to be:

- invalid, age, sole parent's or widow's pension (29%);
- someone else's income (19%);
- superannuation (19%).

South Australian females expectations differed considerably from the national experience in that a much greater proportion (37%) were looking to an invalid, age, sole parent's or widow's pension as their main source of retirement income while 20% were to rely on someone else's income and 16% on superannuation.

PERSONS INTENDING TO RETIRE: EXPECTED MAIN SOURCE OF INCOME, 1994



The proportion of persons intending to retire who expected superannuation to be their main source of income at retirement (28%) was greater than the proportion of persons who retired aged 45 years and over whose main source of income was superannuation (10%). This may reflect to some extent the increasing proportion of persons intending to retire who have superannuation cover (from 67% in November 1989 to 82% in November 1994).

Change in main source of income

In November 1994, there were 762,300 (63,390 in South Australia) retired persons whose main source of income had changed since retirement. For males whose main source of income had changed, the main source of income at retirement most frequently reported was 'sickness, special and other benefits' (25%) and 'savings or sale of assets' (25%). The respective percentages for South Australian males at 35% and 18% showed some variation from the national data.

For females whose main source of income had changed, the most frequently reported main source of income at retirement was 'someone else's income' (56%). The South Australian proportion (58%) was similar.

For both males and females who had changed their main source of income since retirement, most (63% of males and 67% of females) gave their main source of income at the time of the survey as 'invalid, age,

sole parent's, widow's pension'. The South Australian proportions were 67% and 73% respectively.

Retirement scheme membership at retirement

In November 1994, 53% of persons who had retired at age 45 years and over belonged to a retirement scheme, compared with 47% in October 1992. The proportion of retired males aged 45 and over who belonged to a retirement scheme was 61% in November 1994, an increase from 58% in October 1992. For retired females aged 45 and over, retirement scheme membership increased to 41% in November 1994 from 31% in October 1992. The South Australian responses were generally in line with the national data.

The increase in the level of retirement scheme membership reflected an increased level of superannuation cover. In 1994, 50% of persons who had retired aged 45 and over reported that they had superannuation cover, compared with 43% in 1992. In contrast, the small percentage of persons reporting life assurance or other schemes fell from 3.8% in 1992 to 2.7% in 1994. The South Australian percentages were similar but the movement in the number who had life assurance or other schemes was from 5.4% to 3.6%.

Main source of income at November 1994 and retirement scheme membership at retirement

In November 1994, of the 1,993,100 (179,440 in South Australia) persons who had retired from work aged 45 and over, more than one-half (53%) belonged to a retirement scheme. Of the 1,048,900 retirees who belonged to a retirement scheme, the most frequently reported main sources of income at November 1994 were 'invalid, age, sole parent's, widow's pension' (39%); 'superannuation, life assurance or some other retirement scheme' (18%); 'investments, interest, stock debentures, etc.' (10%) and 'war disability, repatriation, service, war widow's pension' (10%).

In comparison 66% (71% in SA) of retired persons who did not belong to a retirement scheme at retirement reported 'invalid, age, sole parent's, widow's pension' as their main source of income. A further 11% (13% in SA) reported 'war disability, repatriation service, war widow's pension' as their main source of income.

Retirement Intentions

In November 1994, there were 1,898,500 (153,730 in SA) persons aged 45 and over who intended to retire.

Of the 1,320,700 males who intended to retire:

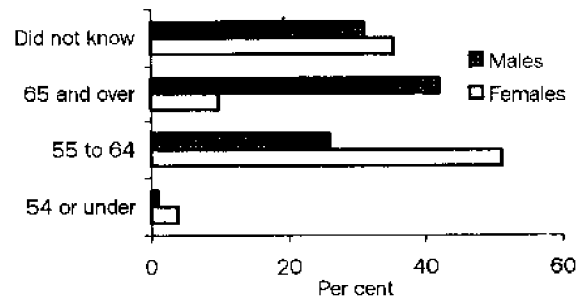
- 42% intended to retire aged 65 and over;
- 28% intended to retire aged 55 to 64 years;
- 28% did not know at what age they intended to retire.

Of the 577,800 females aged 45 and over who intended to retire:

- 11% intended to retire aged 65 and over;
- 51% intended to retire aged 55 to 64;
- 32% did not know at what age they intended to retire.

Details on the 108,550 South Australian males and the 45,180 females who intended to retire tended to reflect the national figures.

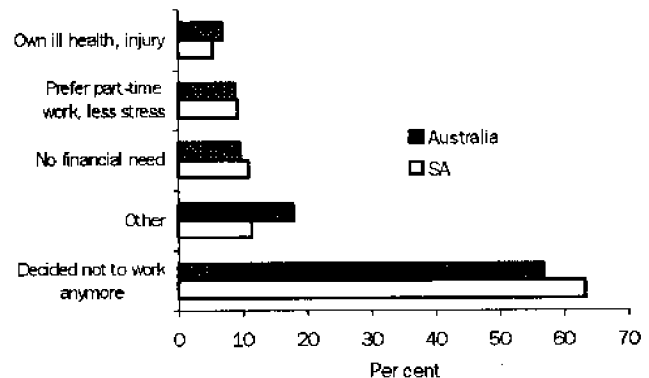
AGE OF INTENDED RETIREMENT: PERSONS WORKING FULL-TIME, AGED 45 AND OVER SOUTH AUSTRALIA



Whether intended to retire early

In November 1994, there were 532,100 (39,580 in SA) persons aged 45 and over who intended to retire early, 28% (26%) of all those who intended to retire. The most common reason given for retiring early was 'decided not to work any more, more leisure time' (57% of males and 58% of females). In South Australia 63% of both males and females in this category gave their reason for early retirement as 'decided not to work any more, more leisure time'.

PERSONS INTENDING TO RETIRE EARLY: MAIN REASONS



Retirement scheme membership at November 1994

The level of retirement scheme membership for those intending to retire had increased from 81% in 1992 to 84% in 1994. The proportion of persons intending to retire covered by superannuation had increased over the same period from 77% to 82%. For males, retirement scheme membership increased from 83% in 1992 to 86% in 1994, while for females, 80% belonged to a retirement scheme in 1994 compared with 74% in 1992. Although a similar proportion (81%) of South Australians intending to retire were covered by superannuation schemes in 1992, the 1994 survey showed greater coverage for South Australians than the national average (86% compared with 84%).

Further Reference

More detailed information on the Australian data has been included in the April 1995 issue of the ABS publication, *Labour Force, Australia* (6203.0) which is available from ABS Bookshops in all capital cities. Inquiries for additional South Australian data should be directed to Arnold Strals, telephone (08) 237 7365.

PC AUSSTATS

Online access to the latest statistical information from the ABS

The most accessible statistics in Australia . . .

With PC AUSSTATS, getting access to ABS information has never been easier.

Online, all the time . . .

You'll never be without vital information again. PC AUSSTATS will let you access the information you need, when you need it — 24 hours a day, 7 days a week.

You can connect to the ABS database and find the information you want, simply and quickly. And once you've selected the information, downloading to your PC is done for you by the PC AUSSTATS software.

Ready to go . . .

Once downloaded, the data is in .wks format — compatible with all the most common spreadsheet packages available today — so it's ready for instant analysis and manipulation on your own PC.

And with thousands of series covering the most important economic and social data, it's like having your own private ABS library — with librarian.

With the latest information . . .

By using PC AUSSTATS, you will know that you have the latest information available.

The main PC AUSSTATS database is updated daily, giving you full access to the latest facts and figures about the nation.

Plus, you don't have to worry about revisions or corrections to the data — the PC AUSSTATS database is updated in line with any revisions to our printed publications.

. . . and a historical perspective

The database that you access with PC AUSSTATS gives you time series data.

So you get not only the latest information, but also a historical perspective — and this gives you the base you need to perform your own trend analysis.

Historical information is typically available for a 15 year period for all series on PC AUSSTATS — and this includes monthly, quarterly, half yearly and yearly series.

Arrange a demonstration today . . .

For a demonstration of this powerful new information resource, call Graham Duncan on (08) 237 7609.

TIME SERIES

STATE ACCOUNTS AT CURRENT PRICES South Australia

Period	Final consumption expenditure		Gross fixed capital expenditure		State final demand	Gross State product (f)	Wages, salaries and supplements
	Private	Public	Private	Public			
ANNUAL (\$ million)							
1984-85	10,502	3,501	3,048	1,047	18,098	17,372	9,193
1985-86	11,564	3,858	3,162	1,266	19,850	19,343	9,990
1986-87	12,451	4,200	3,255	1,286	21,192	20,657	10,654
1987-88	13,730	4,389	3,964	1,194	23,277	22,863	11,269
1988-89	15,232	4,646	4,149	1,425	25,452	25,567	12,591
1989-90	16,485	5,000	4,489	1,574	27,548	28,020	14,009
1990-91	18,097	5,474	4,228	1,503	29,302	28,321	14,776
1991-92	18,946	5,827	3,999	1,372	30,144	28,861	14,756
1992-93	19,442	6,049	3,953	1,336	30,780	30,289	15,264
1993-94	20,191	6,724	3,958	1,129	32,002	32,176	16,102
PERCENTAGE CHANGE FROM PREVIOUS YEAR							
1985-86	10.1	10.2	3.7	20.9	9.7	11.3	8.7
1986-87	7.7	8.9	2.9	1.6	6.8	6.8	6.6
1987-88	10.3	4.5	21.8	-7.2	9.8	10.7	5.8
1988-89	10.9	5.9	4.7	19.3	9.3	11.8	11.7
1989-90	8.2	7.6	8.2	10.5	8.2	9.6	11.3
1990-91	9.8	9.5	-5.8	-4.5	6.4	1.1	5.5
1991-92	4.7	6.4	-5.4	-8.7	2.9	1.9	-0.1
1992-93	2.6	3.8	-1.2	-2.6	2.1	4.9	3.4
1993-94	3.9	11.2	0.1	-15.5	4.0	6.2	5.5
QUARTERLY, ORIGINAL (\$ million)							
1992 - 93 -							
March	4,661	1,443	914	290	7,308	7,653	3,691
June	4,833	1,564	1,035	430	7,862	7,475	3,914
1993 - 94 -							
September	4,989	1,632	976	248	7,845	7,797	4,019
December	5,328	1,624	1,023	297	8,272	8,519	4,057
March	4,875	1,482	930	245	7,532	7,855	3,879
June	4,999	1,986	1,029	339	8,353	8,005	4,147
1994 - 95 -							
September	5,279	1,699	1,146	245	8,369	8,162	4,067
December	5,629	1,635	1,534	283	9,081	8,923	4,183
March	5,245	1,477	1,211	286	8,219	8,026	3,961
QUARTERLY, TREND (\$ million)							
1992 - 93 -							
March	4,878	1,517	1,002	337	7,734	7,682	3,859
June	4,927	1,547	1,000	327	7,801	7,798	3,919
1993 - 94 -							
September	4,987	1,568	986	307	7,848	7,879	3,955
December	5,036	1,615	977	290	7,918	7,968	3,984
March	5,083	1,683	973	285	8,024	8,083	4,022
June	5,150	1,738	1,054	276	8,218	8,184	4,062
1994 - 95 -							
September	5,241	1,728	1,195	277	8,441	8,253	4,081
December	5,342	1,657	1,321	297	8,617	8,287	4,084
March	5,446	1,565	1,388	323	8,722	8,310	4,090
PERCENTAGE CHANGE FROM PREVIOUS QUARTER, TREND							
1992 - 93 -							
June	1.0	2.0	-0.2	-3.0	0.9	1.5	1.6
1993 - 94 -							
September	1.2	1.4	-1.4	-6.1	0.6	1.0	0.9
December	1.0	3.0	-0.9	-5.5	0.9	1.1	0.7
March	0.9	4.2	-0.4	-1.7	1.3	1.4	1.0
June	1.3	3.3	8.3	-3.2	2.4	1.2	1.0
1994 - 95 -							
September	1.8	-0.6	13.4	0.4	2.7	0.8	0.5
December	1.9	-4.1	10.5	7.2	2.1	0.4	0.1
March	1.9	-5.6	5.1	8.8	1.2	0.3	0.1

STATE ACCOUNTS AT AVERAGE 1989-90 PRICES
South Australia

Period	Final consumption expenditure		Gross fixed capital expenditure		State final demand	Gross State product (I)
	Private	Public	Private	Public		
ANNUAL (\$ million)						
1984-85	14,709	4,498	4,112	1,339	24,658	23,344
1985-86	14,973	4,688	3,850	1,504	25,015	25,011
1986-87	14,933	4,851	3,622	1,437	24,843	25,320
1987-88	15,431	4,877	4,243	1,303	25,854	26,005
1988-89	16,067	4,874	4,281	1,495	26,717	26,777
1989-90	16,485	5,000	4,489	1,574	27,548	28,020
1990-91	17,147	5,212	4,090	1,453	27,902	27,604
1991-92	17,434	5,345	3,834	1,307	27,920	27,188
1992-93	17,451	5,460	3,669	1,251	27,831	28,247
1993-94	17,821	5,762	3,607	1,052	28,242	29,173
PERCENTAGE CHANGE FROM PREVIOUS YEAR						
1985-86	1.8	4.2	-6.4	12.3	1.4	7.1
1986-87	-0.3	3.5	-5.9	-4.5	-0.7	1.2
1987-88	3.3	0.5	17.1	-9.3	4.1	2.7
1988-89	4.1	-0.1	0.9	14.7	3.3	3.0
1989-90	2.6	2.6	4.9	5.3	3.1	4.6
1990-91	4.0	4.2	-8.9	-7.7	1.3	-1.5
1991-92	1.7	2.6	-6.3	-10.0	0.1	-1.5
1992-93	0.1	2.2	-4.3	-4.3	-0.3	3.9
1993-94	2.1	5.5	-1.7	-15.9	1.5	3.3
QUARTERLY, ORIGINAL (\$ million)						
1992 - 93 -						
March	4,164	1,310	841	271	6,586	7,132
June	4,303	1,421	948	402	7,074	6,902
1993 - 94 -						
September	4,423	1,407	899	231	6,960	7,108
December	4,706	1,388	936	274	7,304	7,954
March	4,299	1,314	842	232	6,687	7,083
June	4,393	1,653	930	315	7,291	7,028
1994 - 95 -						
September	4,619	1,475	1,042	230	7,366	7,122
December	4,905	1,394	1,425	268	7,992	7,917
March	4,527	1,310	1,112	269	7,218	6,967
QUARTERLY, TREND (\$ million)						
1992 - 93 -						
March	4,368	1,366	923	314	6,971	7,144
June	4,387	1,375	918	304	6,984	7,231
1993 - 94 -						
September	4,423	1,378	906	285	6,992	7,275
December	4,453	1,402	893	270	7,018	7,286
March	4,486	1,447	881	267	7,081	7,289
June	4,530	1,486	954	259	7,229	7,272
1994 - 95 -						
September	4,588	1,479	1,092	261	7,420	7,251
December	4,650	1,430	1,216	279	7,575	7,236
March	4,711	1,382	1,286	305	7,684	7,230
PERCENTAGE CHANGE FROM PREVIOUS QUARTER, TREND						
1992 - 93 -						
June	0.4	0.7	-0.5	-3.2	0.2	1.2
1993 - 94 -						
September	0.8	0.2	-1.3	-6.3	0.1	0.6
December	0.7	1.7	-1.4	-5.3	0.4	0.2
March	0.7	3.2	-1.3	-1.1	0.9	0.0
June	1.0	2.7	8.3	-3.0	2.1	-0.2
1994 - 95 -						
September	1.3	-0.5	14.5	0.8	2.6	-0.3
December	1.4	-3.3	11.4	6.9	2.1	-0.2
March	1.3	-3.4	5.8	9.3	1.4	-0.1

MERCHANDISE EXPORTS BY SELECTED COMMODITY GROUP
Final Production in South Australia
(\$'000)

<i>Period</i>	<i>Meat and meat preparations</i>	<i>Cereals and cereal preparations</i>	<i>Wine</i>	<i>Wool and sheepskins</i>	<i>Machinery</i>	<i>Metals and metal manu- factures</i>	<i>Fish and crustaceans</i>	<i>Road vehicles, parts and accessories</i>	<i>Petroleum and petroleum products</i>	<i>Total</i>
ANNUAL										
1988-89	181,058	475,481	71,474	415,098	104,163	239,656	95,720	124,815	189,679	2,451,372
1989-90	244,374	724,369	73,484	285,650	111,944	371,136	111,760	161,704	188,105	2,828,091
1990-91	234,299	587,199	123,567	257,576	152,940	433,341	122,604	117,218	291,507	3,007,137
1991-92	270,237	565,582	165,914	351,096	176,536	489,030	147,532	137,091	341,477	3,431,139
1992-93	282,181	573,375	192,255	318,989	211,426	490,594	154,608	338,359	372,445	3,760,602
1993-94	324,795	436,520	238,367	290,964	223,760	462,352	186,860	351,230	276,474	3,889,780
1994-95	306,644	260,230	250,031	300,369	284,337	570,845	191,259	332,166	285,310	3,818,491
MONTHLY										
1993 - 94 -										
May	35,616	40,755	19,407	27,009	18,061	59,004	17,616	15,860	15,315	333,032
June	26,408	41,603	21,679	26,490	19,147	45,524	12,431	13,030	29,830	333,256
1994 - 95 -										
July	16,853	24,151	17,994	21,467	21,346	28,235	14,862	28,268	8,489	275,100
August	16,427	20,282	22,287	16,510	18,805	43,510	9,563	29,613	26,352	297,986
September	24,651	35,756	29,230	22,493	19,706	45,405	7,706	27,442	39,196	339,142
October	28,580	27,555	29,550	26,817	23,286	32,446	23,210	26,883	33,289	369,990
November	31,420	21,898	15,727	38,562	24,838	39,758	20,372	35,507	28,000	341,036
December	26,513	12,077	14,206	30,323	25,819	45,363	14,891	29,565	13,200	282,673
January	23,308	21,327	12,218	24,480	11,961	66,781	14,201	17,398	29,049	295,699
February	28,109	8,880	17,119	24,988	18,590	32,543	13,945	23,963	11,731	240,801
March	28,170	23,436	23,246	25,726	31,591	70,371	17,167	25,387	33,727	390,229
April	31,672	11,594	25,286	26,052	27,399	63,103	17,926	25,059	21,635	321,575
May	28,571	16,329	21,039	23,908	28,861	67,651	24,111	32,744	11,789	340,077
June	22,370	36,945	22,129	19,043	32,335	35,679	13,305	30,337	38,853	324,183
1995 - 96 -										
July	13,991	31,376	24,676	20,775	28,812	29,384	20,607	23,584	14,069	291,037

MERCHANDISE EXPORTS BY SELECTED COUNTRIES
Final Production in South Australia
(\$'000)

<i>Period</i>	<i>European Community</i>				<i>New Zealand</i>	<i>East Asia</i>				<i>Other East Asia</i>
	<i>United States</i>	<i>Middle East</i>	<i>United Kingdom</i>	<i>Other Community</i>		<i>Japan</i>	<i>China</i>	<i>Hong Kong</i>	<i>ASEAN</i>	
ANNUAL										
1988-89	184,903	397,324	108,635	231,434	230,263	390,207	51,975	55,474	230,112	141,380
1989-90	229,169	551,953	121,319	274,951	289,970	359,643	86,303	49,273	272,761	162,229
1990-91	321,032	325,450	186,353	270,722	179,193	438,970	146,434	80,640	403,566	214,966
1991-92	300,139	381,761	220,048	291,939	214,522	647,674	148,308	108,583	433,138	288,576
1992-93	352,764	314,049	237,520	327,696	288,421	649,684	208,135	171,803	475,253	306,922
1993-94	393,610	280,499	263,092	277,786	311,999	625,482	220,211	165,164	528,636	358,920
1994-95	328,031	187,171	245,275	283,960	375,551	681,189	176,580	192,656	532,824	411,056
MONTHLY										
1993 - 94 -										
May	26,512	28,689	19,442	22,287	24,281	54,292	21,440	16,319	47,583	30,356
June	41,064	29,568	20,320	22,641	16,495	47,454	17,402	11,626	50,763	29,063
1994 - 95 -										
July	36,531	15,015	13,525	11,269	39,604	50,242	10,775	14,820	24,368	23,195
August	25,708	19,773	19,270	24,587	29,779	54,952	20,681	13,367	41,656	18,373
September	25,319	25,907	29,253	25,377	29,219	41,864	17,432	11,876	60,582	31,690
October	29,113	15,689	47,808	25,083	34,539	78,846	17,467	16,293	30,935	35,774
November	33,212	9,184	11,258	20,439	35,786	65,320	14,078	17,070	63,647	34,757
December	23,218	13,049	12,257	26,429	29,637	47,557	11,591	18,008	31,655	36,572
January	20,880	13,813	11,643	23,865	31,354	42,079	13,616	17,018	61,272	33,067
February	22,016	13,923	12,754	15,569	20,281	46,784	13,609	13,978	20,655	35,089
March	35,767	19,072	29,526	35,964	33,883	66,353	18,388	22,656	58,867	30,282
April	25,300	9,691	25,224	17,329	28,980	45,254	13,278	15,232	54,764	49,522
May	26,022	6,845	16,126	36,764	34,593	75,952	13,534	13,441	32,962	53,549
June	24,945	25,210	16,631	21,285	27,896	65,986	12,131	18,897	51,461	29,186
1995 - 96 -										
July	30,569	28,545	19,884	15,476	31,975	49,732	16,523	14,605	33,982	20,788

MERCHANDISE EXPORTS BY INDUSTRY OF ORIGIN
Final Production in South Australia
(\$'000)

Period	Manufacturing							Other	Other	Total
	Agriculture, forestry and fishing	Mining	Food, beverages and tobacco	Petroleum, coal, chemical associated product	Metal product	Machinery and equipment	Other			
ANNUAL										
1988-89	891,829	107,269	511,427	176,018	255,046	268,737	96,031	145,015	2,451,372	
1989-90	979,463	133,318	578,379	132,725	403,204	318,882	99,958	182,162	2,828,091	
1990-91	804,154	120,930	591,117	264,813	471,899	335,347	155,351	263,526	3,007,137	
1991-92	626,738	248,846	700,586	201,674	540,542	379,482	178,485	554,786	3,431,139	
1992-93	559,996	294,586	764,372	195,354	509,303	641,206	178,726	617,060	3,760,602	
1993-94	340,338	245,247	884,463	178,438	475,058	665,066	205,977	895,189	3,889,780	
1994-95	383,077	268,513	860,746	187,394	585,385	706,451	242,411	584,512	3,818,491	
MONTHLY										
1993 - 94 - June	29,485	31,114	80,990	15,632	45,878	38,844	16,302	75,010	333,256	
1994 - 95 - July	35,908	1,596	62,443	16,638	30,765	57,358	21,081	49,311	275,100	
August	18,507	29,932	56,573	12,076	44,556	55,638	23,669	57,035	297,986	
September	26,399	31,213	74,070	17,501	46,256	53,638	17,245	72,821	339,142	
October	30,335	23,054	89,045	17,985	33,327	59,284	24,608	92,352	369,990	
November	50,401	32,605	74,606	13,311	39,788	70,264	21,677	38,383	341,036	
December	35,414	9,123	60,461	14,794	46,285	62,204	18,477	35,917	282,673	
January	35,408	36,405	53,821	12,965	68,087	35,733	15,675	37,608	295,699	
February	34,816	7,526	63,368	12,400	33,937	49,410	17,219	22,124	240,801	
March	35,456	42,788	72,674	13,742	72,670	63,390	19,123	70,386	390,229	
April	33,207	5,790	94,247	23,153	64,453	58,682	19,585	22,456	321,575	
May	21,544	19,086	84,630	14,417	68,799	70,184	21,220	40,196	340,077	
June	25,684	29,395	74,808	18,412	36,462	70,666	22,832	45,923	324,183	
1995 - 96 - July	34,727	7,840	74,273	16,626	30,232	58,989	16,924	51,427	291,037	

MERCHANDISE IMPORTS BY SELECTED COMMODITY GROUP
Import Documents Lodged in South Australia
(\$'000)

Period	Food, beverages and tobacco	Petroleum and petroleum products	Chemicals	Textiles	Metals and metal manufactures	Machinery	Road vehicles, parts and accessories	Other manufactured goods	Total
ANNUAL									
1988-89	60,395	169,397	144,766	47,592	135,225	411,092	415,120	344,344	1,861,622
1989-90	71,796	203,654	167,154	49,249	147,969	462,885	414,800	399,437	2,050,024
1990-91	78,926	425,262	140,894	49,087	135,772	515,226	372,603	366,304	2,193,851
1991-92	82,095	362,777	153,574	62,884	151,165	523,848	435,121	513,012	2,396,954
1992-93	91,756	570,334	186,001	57,434	255,924	609,212	661,714	521,723	3,068,122
1993-94	99,179	404,628	200,226	60,172	160,936	595,238	663,616	484,590	2,803,445
1994-95	115,930	330,432	220,535	64,502	214,536	694,853	748,634	563,812	3,098,857
MONTHLY									
1993 - 94 - June	7,769	39,321	13,241	5,124	14,553	40,643	74,663	34,022	239,770
1994 - 95 - July	8,221	38,192	15,231	6,675	11,335	53,007	69,239	44,374	254,301
August	7,771	43,158	10,385	5,394	17,333	55,586	70,264	52,102	279,021
September	8,482	20,570	19,869	4,380	15,442	54,068	60,834	37,758	231,418
October	14,848	19,447	11,040	5,653	13,849	56,688	90,244	48,815	269,859
November	12,383	107	15,461	6,952	20,622	56,130	63,462	51,455	240,036
December	9,690	23,355	10,711	3,751	12,863	57,066	51,639	41,335	220,745
January	10,692	39,273	19,760	4,208	12,259	63,883	49,403	48,817	260,849
February	7,889	50,628	17,349	3,931	17,541	53,842	47,177	41,285	251,558
March	8,852	20,952	27,665	6,766	24,066	76,636	63,870	54,292	296,240
April	7,487	25,235	14,812	5,534	18,523	51,476	67,866	48,431	252,630
May	11,288	25,162	33,901	5,819	22,369	52,636	58,222	44,835	267,436
June	8,327	24,353	24,351	5,639	28,334	63,835	56,414	50,313	274,764
1995 - 96 - July	9,130	51,035	22,662	7,374	16,316	58,030	53,293	47,533	286,448

TURNOVER OF RETAIL ESTABLISHMENTS BY INDUSTRY
South Australia

<i>Period</i>	<i>Food retailing</i>	<i>Department stores</i>	<i>Clothing and soft good retailing</i>	<i>Household good retailing</i>	<i>Recreational good retailing</i>	<i>Other retailing</i>	<i>Hospitality and services</i>	<i>Total</i>
ANNUAL (\$ million)								
1985-86	2,086.1	833.3	404.8	607.6	226.0	312.4	938.0	5,408.2
1986-87	2,240.3	893.8	396.8	578.3	229.7	332.3	999.5	5,660.7
1987-88	2,378.5	951.2	416.7	634.5	237.5	367.0	1,082.7	6,068.1
1988-89	2,534.9	971.8	462.2	695.8	268.5	420.7	1,178.7	6,532.6
1989-90	2,679.8	1,041.1	521.1	739.5	291.6	467.1	1,212.9	6,953.1
1990-91	2,978.2	1,069.0	543.9	738.1	303.9	497.7	1,312.6	7,443.4
1991-92	3,163.1	1,087.4	466.5	758.8	278.7	515.7	1,370.6	7,640.8
1992-93	3,018.5	1,101.5	434.2	783.3	311.2	617.4	1,244.7	7,510.8
1993-94	3,152.3	1,107.8	466.1	849.2	354.9	639.6	1,277.8	7,847.7
1994-95	3,360.7	1,128.7	524.0	881.1	359.0	737.8	1,562.3	8,553.6
MONTHLY, ORIGINAL (\$ million)								
1993 - 94 - June	251.1	90.7	39.5	70.7	25.3	52.0	95.6	624.9
1994 - 95 - July	264.3	83.8	38.5	68.6	27.4	54.3	110.0	646.9
August	262.4	84.6	37.7	69.1	26.7	57.6	111.9	650.0
September	266.5	87.4	41.3	67.6	26.0	60.3	121.3	670.4
October	275.6	93.3	43.6	73.2	28.2	59.1	127.4	700.4
November	276.9	103.5	43.6	78.0	30.5	63.0	128.0	723.5
December	332.5	175.2	64.0	88.7	45.7	81.4	154.5	942.0
January	275.2	74.0	40.1	72.0	28.9	55.5	137.1	682.8
February	263.4	68.6	34.7	63.5	27.3	54.6	127.7	639.8
March	292.2	85.7	43.1	71.7	29.9	62.0	137.7	722.3
April	282.8	91.0	47.6	70.2	29.5	60.9	140.8	722.8
May	286.6	94.8	46.4	78.4	30.6	64.7	133.9	735.4
June	282.3	86.8	43.4	80.1	28.3	64.4	132.0	717.3
1995 - 96 - July	282.3	92.0	41.9	80.2	29.4	65.0	138.9	729.6
MONTHLY, TREND (\$ million)								
1993 - 94 - June	263.9	93.4	39.6	71.7	27.6	56.2	111.4	663.7
1994 - 95 - July	266.5	93.8	39.9	71.3	27.7	57.2	114.7	671.2
August	269.5	94.1	40.6	71.0	28.2	58.3	118.0	679.7
September	272.5	94.1	41.7	70.9	28.8	59.0	120.8	687.9
October	275.0	93.6	43.0	70.9	29.3	59.3	123.0	694.0
November	276.8	93.0	44.2	70.9	29.7	59.4	124.8	698.9
December	278.6	92.8	45.1	71.1	30.0	59.8	126.9	704.0
January	280.7	93.0	45.6	71.9	30.1	60.7	129.7	711.6
February	283.1	93.4	45.6	73.2	30.2	62.1	133.4	721.0
March	285.6	94.2	45.2	75.0	30.3	63.8	137.4	731.5
April	287.8	95.0	44.6	77.2	30.6	65.3	141.2	741.6
May	289.6	95.7	44.0	79.3	30.9	66.6	144.5	750.6
June	290.9	96.4	43.3	81.3	31.2	67.6	147.4	758.1
1995 - 96 - July	291.8	97.4	42.9	82.7	31.5	68.3	149.7	764.2
PERCENTAGE CHANGE FROM PREVIOUS MONTH, TREND								
1994 - 95 - July	1.0	0.4	0.8	-0.6	0.4	1.8	3.0	1.1
August	1.1	0.3	1.8	-0.4	1.8	1.9	2.9	1.3
September	1.1	0.0	2.7	-0.1	2.1	1.2	2.4	1.2
October	0.9	-0.5	3.1	0.0	1.7	0.5	1.8	0.9
November	0.7	-0.6	2.8	0.0	1.4	0.2	1.5	0.7
December	0.7	-0.2	2.0	0.3	1.0	0.7	1.7	0.7
January	0.8	0.2	1.1	1.1	0.3	1.5	2.2	1.1
February	0.9	0.4	0.0	1.8	0.3	2.3	2.9	1.3
March	0.9	0.9	-0.9	2.5	0.3	2.7	3.0	1.5
April	0.8	0.8	-1.3	2.9	1.0	2.4	2.8	1.4
May	0.6	0.7	-1.3	2.7	1.0	2.0	2.3	1.2
June	0.4	0.7	-1.6	2.5	1.0	1.5	2.0	1.0
1995 - 96 - July	0.3	1.0	-0.9	1.7	1.0	1.0	1.6	0.8

NEW MOTOR VEHICLE REGISTRATIONS BY TYPE OF VEHICLE
South Australia

Period	Original			Seasonally adjusted			Trend estimate		
	Cars and station wagons	Other vehicles	Total	Cars and station wagons	Other vehicles	Total	Cars and station wagons	Other vehicles	Total
ANNUAL									
1983-84	41,204	9,769	50,973
1984-85	45,809	11,795	57,604						
1985-86	40,840	9,620	50,460						
1986-87	29,788	6,430	36,218						
1987-88	29,915	5,775	35,690						
1988-89	31,920	6,816	38,736						
1989-90	35,211	7,808	43,019						
1990-91	34,753	6,619	41,372						
1991-92	32,351	5,333	37,684						
1992-93	32,894	5,577	38,471						
1993-94	32,806	5,781	38,587						
1994-95	35,830	6,736	42,566						
PERCENTAGE CHANGE FROM PREVIOUS YEAR									
1984-85	11.2	20.7	13.0
1985-86	-10.8	-18.4	-12.4						
1986-87	-27.1	-33.2	-28.2						
1987-88	0.4	-10.2	-1.5						
1988-89	6.7	18.0	8.5						
1989-90	10.3	14.6	11.1						
1990-91	-1.3	-15.2	-3.8						
1991-92	-6.9	-19.4	-8.9						
1992-93	1.7	4.6	2.1						
1993-94	-0.3	3.7	0.3						
1994-95	9.2	16.5	10.3						
MONTHLY									
1993 - 94 -									
April	2,219	432	2,651	2,557	488	3,045	2,756	526	3,282
May	2,672	563	3,235	2,697	549	3,247	2,769	555	3,324
June	3,196	826	4,022	2,951	696	3,648	2,788	567	3,354
1994 - 95 -									
July	2,870	523	3,393	2,902	527	3,428	2,803	558	3,362
August	2,869	513	3,382	2,686	522	3,208	2,820	540	3,360
September	3,140	479	3,619	2,904	489	3,393	2,841	523	3,364
October	2,883	488	3,371	2,797	502	3,300	2,874	515	3,389
November	3,144	589	3,733	2,891	518	3,410	2,913	520	3,433
December	2,941	549	3,490	2,914	545	3,459	2,962	533	3,495
January	2,436	440	2,876	3,177	596	3,773	3,026	553	3,579
February	2,863	502	3,365	3,105	532	3,637	3,077	570	3,647
March	3,333	692	4,025	3,045	587	3,632	3,103	583	3,686
April	2,335	451	2,786	2,786	544	3,331	3,098	590	3,688
May	3,647	695	4,342	3,558	644	4,201	3,067	591	3,658
June	3,369	815	4,184	3,115	683	3,798	3,018	586	3,604
1995 - 96 -									
July	2,547	445	2,992	2,568	454	3,022	2,947	576	3,523
PERCENTAGE CHANGE FROM PREVIOUS MONTH									
1993 - 94 -									
May	20.4	30.3	22.0	5.5	12.5	6.6	0.5	5.5	1.3
June	19.6	46.7	24.3	9.4	26.8	12.3	0.7	2.2	0.9
1994 - 95 -									
July	-10.2	-36.7	-15.6	-1.7	-24.3	-6.0	0.5	-1.6	0.2
August	0.0	-1.9	-0.3	-7.4	-0.9	-6.4	0.6	-3.2	-0.1
September	9.4	-6.6	7.0	8.1	-6.3	5.8	0.7	-3.1	0.1
October	-8.2	1.9	-6.9	-3.7	2.7	-2.7	1.2	-1.5	0.7
November	9.1	20.7	10.7	3.4	3.2	3.3	1.4	1.0	1.3
December	-6.5	-6.8	-6.5	0.8	5.2	1.4	1.7	2.5	1.8
January	-17.2	-19.9	-17.6	9.0	9.4	9.1	2.2	3.8	2.4
February	17.5	14.1	17.0	-2.3	-10.7	-3.6	1.7	3.1	1.9
March	16.4	37.8	19.6	-1.9	10.3	-0.1	0.8	2.3	1.1
April	-29.9	-34.8	-30.8	-8.5	-7.3	-8.3	-0.2	1.2	0.1
May	56.2	54.1	55.9	27.7	18.4	26.1	-1.0	0.2	-0.8
June	-7.6	17.3	-3.6	-12.5	6.1	-9.6	-1.6	-0.8	-1.5
1995 - 96 -									
July	-24.4	-45.4	-28.5	-17.6	-33.5	-20.4	-2.4	-1.7	-2.2

ACTUAL PRIVATE NEW CAPITAL EXPENDITURE BY SELECTED INDUSTRY AND TYPE OF ASSET
South Australia

Period	Industry			Total	Type of asset	
	Mining	Manufacturing	Other selected industries		New buildings and structures	Equipment, plant and machinery
ANNUAL (\$ million)						
1989-90	87.0	726.7	973.5	1,787.1	633.1	1,154.0
1990-91	122.1	742.2	987.5	1,851.7	627.8	1,223.9
1991-92	193.4	763.4	668.4	1,625.3	392.1	1,233.2
1992-93	218.2	564.0	739.3	1,521.6	416.2	1,105.4
1993-94	97.2	609.8	783.9	1,491.0	363.7	1,127.1
PERCENTAGE CHANGE FROM PREVIOUS YEAR						
1990-91	40.3	2.1	1.4	3.6	-0.8	6.1
1991-92	58.4	2.9	-32.3	-12.2	-37.5	0.8
1992-93	12.8	-26.1	10.6	-6.4	6.1	-10.4
1993-94	-55.5	8.1	6.0	-2.0	-12.6	2.0
QUARTERLY, ORIGINAL (\$ million)						
1992 - 93 -						
March	52.5	139.5	206.7	398.7	126.8	271.8
June	49.4	147.2	143.2	339.8	57.0	282.8
1993 - 94 -						
September	37.0	134.7	187.0	358.7	94.0	264.7
December	27.9	136.3	187.1	351.3	74.7	276.5
March	10.0	134.9	230.1	375.1	124.5	250.6
June	22.3	203.9	179.7	405.9	70.5	335.3
1994 - 95 -						
September	18.5	130.4	326.4	475.3	151.8	323.5
December	44.4	221.4	369.9	635.7	78.7	557.0
March	36.7	201.7	244.9	483.3	84.5	398.8
PERCENTAGE CHANGE FROM PREVIOUS QUARTER, ORIGINAL						
1992 - 93 -						
June	-5.9	5.5	-30.7	-14.8	-55.0	4.0
1993 - 94 -						
September	-25.1	-8.5	30.6	5.6	64.9	-6.4
December	-24.6	1.2	0.1	-2.1	-20.5	4.5
March	-64.2	-1.0	23.0	6.8	66.7	-9.4
June	123.0	51.1	-21.9	8.2	-43.4	33.8
1994 - 95 -						
September	-17.0	-36.0	81.6	17.1	115.3	-3.5
December	140.0	69.8	13.3	33.7	-48.2	72.2
March	-17.3	-8.9	-33.8	-24.0	7.4	-28.4
QUARTERLY, TREND (\$ million)						
1992 - 93 -						
March	n.a.	n.a.	n.a.	390.8	108.2	282.6
June				368.1	90.3	277.8
1993 - 94 -						
September				351.6	80.5	271.2
December				351.0	82.8	268.2
March				368.0	97.3	270.7
June				424.0	111.6	312.4
1994 - 95 -						
September				498.9	112.2	386.8
December				546.1	96.6	449.6
March				562.6	80.2	482.4
PERCENTAGE CHANGE FROM PREVIOUS QUARTER, TREND						
1992 - 93 -						
June	-5.8	-16.5	-1.7
1993 - 94 -						
September				-4.5	-10.9	-2.4
December				-0.2	2.9	-1.1
March				4.8	17.5	0.9
June				15.2	14.7	15.4
1994 - 95 -						
September				17.7	0.5	23.8
December				9.5	-13.9	16.2
March				3.0	-17.0	7.3

TOURIST ACCOMMODATION
South Australia

Period	Hotels, motels, guest houses with facilities			Holiday flats, units and houses			Short-term caravan parks		
	Number of guest rooms	Room occupancy (per cent)	Takings (\$'000)	Number of flats, units and houses	Unit occupancy (per cent)	Takings (\$'000)	Number of sites	Site occupancy (per cent)	Takings (\$'000)
ANNUAL									
1986-87	8,497	52.9	79,254	n.a.	n.a.	n.a.	18,773	18.1	12,647
1987-88	9,156	50.8	89,321	1,105	45.4	8,109	18,926	17.8	13,248
1988-89	9,396	50.5	102,737	1,171	45.8	9,792	19,195	17.4	14,711
1989-90	10,316	52.0	121,788	1,113	48.4	11,381	19,847	18.4	17,174
1990-91	10,445	48.0	128,634	1,210	43.9	10,339	19,794	17.7	18,102
1991-92	10,745	46.6	130,578	1,302	40.4	10,492	20,601	17.1	19,111
1992-93	10,632	46.5	129,882	1,338	40.2	10,740	20,038	22.3	20,113
1993-94	10,597	48.6	136,782	1,338	40.9	11,700	19,591	23.7	20,790
1994-95	10,594	51	149,698	1,342	40.0	11,645	20,175	24.5	22,536
PERCENTAGE CHANGE FROM PREVIOUS YEAR									
1987-88	7.8	..	12.7	n.a.	..	n.a.	0.8	..	4.8
1988-89	2.6	..	15.0	6.0	..	20.8	1.4	..	11.0
1989-90	9.8	..	18.5	-5.0	..	16.2	3.4	..	16.7
1990-91	1.3	..	5.6	8.7	..	-9.2	-0.3	..	5.4
1991-92	2.9	..	1.5	7.6	..	1.5	4.1	..	5.6
1992-93	-1.1	..	-0.5	2.8	..	2.4	-2.7	..	5.2
1993-94	-0.3	..	6.9	0.0	..	8.9	-2.2	..	3.4
1994-95	0.0	..	7.9	0.3	..	-0.5	3.0	..	8.4
QUARTERLY									
1992 - 93 -									
December	10,763	47.8	36,063	1,323	40.0	2,905	20,462	22.1	5,167
March	10,739	47.0	32,210	1,313	49.9	3,263	20,159	26.6	6,084
June	10,632	46.2	31,175	1,338	36.8	2,359	20,038	22.8	4,961
1993 - 94 -									
September	10,604	46.8	33,133	1,362	35.2	2,551	19,992	19.1	3,916
December	10,650	50.3	38,096	1,377	41.6	3,290	19,925	23.4	5,370
March	10,625	50.0	35,007	1,321	50.9	3,546	19,606	28.4	6,611
June	10,597	47.4	32,547	1,338	36.1	2,313	19,591	24.3	4,893
1994 - 95 -									
September	10,560	48.7	34,734	1,326	34.0	2,418	19,988	20.9	4,211
December	10,608	53.0	41,265	1,360	40.0	3,000	20,126	24.5	5,681
March	10,603	53.4	37,897	1,337	50.1	3,776	20,132	28.4	7,047
June	10,605	50.0	35,802	1,346	35.9	2,451	20,452	24.3	5,597
PERCENTAGE CHANGE FROM PREVIOUS QUARTER									
1992 - 93 -									
March	-0.2	..	-10.7	-0.8	..	12.3	-1.5	..	17.7
June	-1.0	..	-3.2	1.9	..	-27.7	-0.6	..	-18.5
1993 - 94 -									
September	-0.3	..	6.3	1.8	..	8.1	-0.2	..	-21.1
December	0.4	..	15.0	1.1	..	29.0	-0.3	..	37.1
March	-0.2	..	-8.1	-4.1	..	7.8	-1.6	..	23.1
June	-0.3	..	-7.0	1.3	..	-34.8	-0.1	..	-26.0
1994 - 95 -									
September	-0.3	..	6.7	-0.9	..	4.5	2.0	..	-13.9
December	0.5	..	18.8	2.6	..	24.1	0.7	..	34.9
March	0.0	..	-8.2	-1.7	..	25.9	0.0	..	24.0
June	0.0	..	-5.5	0.7	..	-35.1	1.6	..	-20.6

BUILDING APPROVALS
South Australia

Period	Number of dwelling units				Value (\$ million)			
	Houses		Total(a)		New residential building	Alterations and additions to residential building	Non-residential building	Total building
	Private sector	Total	Private sector	Total				
ANNUAL								
1986-87	5,811	6,706	7,111	9,192	487	82	584	1,152
1987-88	6,276	6,900	7,383	9,009	497	94	749	1,340
1988-89	7,526	8,006	9,642	11,238	690	109	895	1,694
1989-90	7,246	7,675	10,180	11,701	733	110	914	1,757
1990-91	8,351	8,633	10,418	11,426	755	119	591	1,465
1991-92	8,613	8,931	10,254	11,290	756	124	627	1,506
1992-93	9,710	10,087	11,548	12,341	841	133	418	1,392
1993-94	9,470	9,901	11,046	11,777	839	122	375	1,336
1994-95	7,757	8,147	9,208	9,762	740	120	493	1,353
PERCENTAGE CHANGE FROM PREVIOUS YEAR								
1988-89	19.9	16.0	30.6	24.7	38.8	16.0	19.5	26.4
1989-90	-3.7	-4.1	5.6	4.1	6.1	1.2	2.1	3.7
1990-91	15.2	12.5	2.3	-2.4	3.1	8.6	-35.4	-16.6
1991-92	3.1	3.5	-1.6	-1.2	0.1	3.9	6.1	2.8
1992-93	12.7	12.9	12.6	9.3	11.3	7.1	-33.2	-7.6
1993-94	-2.5	-1.8	-4.3	-4.6	-0.2	-8.0	-10.4	-4.0
1994-95	-18.1	-17.7	-16.6	-17.1	-11.8	-1.7	31.5	1.3
MONTHLY, ORIGINAL								
1994 - 95 -								
July	794	798	937	969	70.1	12.0	33.4	115.5
August	897	927	992	1,081	79.7	10.9	32.6	123.2
September	863	913	1,011	1,073	78.3	13.6	33.1	125.0
October	671	691	782	804	57.8	10.3	26.7	94.9
November	796	833	988	1,055	77.6	10.5	30.2	118.3
December	578	606	662	698	54.9	9.4	36.2	100.6
January	515	532	753	774	61.9	8.0	23.4	93.4
February	553	598	632	679	56.3	7.5	26.8	90.6
March	681	747	840	913	70.2	12.6	78.1	160.9
April	403	425	459	481	36.4	6.6	89.3	132.2
May	493	523	549	589	46.3	9.3	35.4	91.0
June	513	554	603	646	50.1	9.2	47.9	107.2
1995 - 96 -								
July	445	463	550	576	45.2	9.0	36.3	90.6
MONTHLY, TREND								
1994 - 95 -								
July	783	827	928	1,003	n.a.	n.a.	n.a.	n.a.
August	781	825	924	996				
September	769	813	910	979				
October	750	794	894	957				
November	725	770	874	930				
December	692	736	842	891				
January	652	691	796	836				
February	609	643	738	772				
March	565	596	677	708				
April	521	549	617	646				
May	480	504	563	591				
June	445	466	521	549				
1995 - 96 -								
July	415	435	480	510				
PERCENTAGE CHANGE FROM PREVIOUS MONTH, TREND								
1994 - 95 -								
August	-0.3	-0.2	-0.4	-0.7	n.a.	n.a.	n.a.	n.a.
September	-1.5	-1.5	-1.5	-1.7				
October	-2.5	-2.3	-1.8	-2.2				
November	-3.3	-3.0	-2.2	-2.8				
December	-4.6	-4.4	-3.7	-4.2				
January	-5.8	-6.1	-5.5	-6.2				
February	-6.6	-6.9	-7.3	-7.7				
March	-7.2	-7.3	-8.3	-8.3				
April	-7.8	-7.9	-8.9	-8.8				
May	-7.9	-8.2	-8.8	-8.5				
June	-7.3	-7.5	-7.5	-7.1				
1995 - 96 -								
July	-6.7	-6.7	-7.9	-7.1				

(a) Total includes the number of self-contained dwelling units approved as part of the construction of non-residential building and alterations to existing buildings (including conversions to dwelling units).

BUILDING COMMENCEMENTS
South Australia

Period	Number of dwelling units				Value (\$ million)				
	Houses		Total		New residential building	Alterations and additions to residential building	Non-residential building		Total building
	Private sector	Total	Private sector	Total			Private sector	Total	
	ANNUAL								
1983-84	7,666	8,642	9,854	12,200	506	50	190	342	898
1984-85	8,502	9,641	11,728	14,205	660	66	346	510	1,236
1985-86	6,334	7,267	8,805	10,705	559	81	431	602	1,242
1986-87	5,345	6,458	6,524	8,913	476	75	430	674	1,225
1987-88	5,664	6,388	6,709	8,443	473	92	527	719	1,284
1988-89	7,132	7,580	8,822	10,235	642	104	760	964	1,710
1989-90	6,734	7,174	9,412	10,936	718	112	670	934	1,764
1990-91	7,863	8,177	9,673	10,821	728	118	367	554	1,400
1991-92	8,036	8,344	9,608	10,671	727	125	344	608	1,460
1992-93	9,122	9,416	10,881	11,635	816	122	205	459	1,397
1993-94	9,159	9,590	10,693	11,481	845	126	210	373	1,345
QUARTERLY									
1992 - 93 -									
March	2,136	2,204	2,704	2,910	203.4	23.9	37.8	88.1	315.5
June	2,369	2,504	2,795	3,024	216.3	38.2	46.3	108.4	363.0
1993 - 94 -									
September	2,611	2,776	2,987	3,254	238.4	30.9	42.6	75.3	344.5
December	2,336	2,395	2,672	2,798	205.4	35.6	60.9	106.6	347.7
March	1,977	2,023	2,406	2,549	188.1	29.8	51.1	97.6	315.4
June	2,235	2,396	2,628	2,880	213.4	30.2	55.2	93.5	337.1
1994 - 95 -									
September	2,413	2,526	2,855	3,083	235.6	34.3	57.0	101.8	371.7
December	2,303	2,435	2,670	2,834	221.1	31.8	52.8	99.5	352.4
March	1,631	1,735	1,934	2,064	167.7	22.7	52.2	88.3	278.6

VALUE OF BUILDING WORK DONE DURING PERIOD
South Australia

Period	New residential building				Alterations and additions to residential buildings	Non-residential building		Total building	
	Houses		Total			Private sector	Total	Private sector	Total
	Private sector	Total	Private sector	Total					
ANNUAL (\$ million)									
1983-84	312.0	348.0	385.2	464.5	48.3	194.8	327.0	627.0	839.8
1984-85	414.4	456.3	542.3	626.7	65.6	285.1	433.4	891.6	1,125.7
1985-86	369.2	411.5	497.9	585.1	78.7	413.6	589.7	988.5	1,253.4
1986-87	310.0	364.8	385.4	492.2	78.4	447.9	645.2	908.1	1,215.8
1987-88	343.8	381.1	391.4	467.7	88.2	551.8	811.2	1,027.0	1,367.1
1988-89	450.2	469.2	538.8	597.0	104.1	657.5	902.2	1,297.3	1,603.3
1989-90	493.8	518.9	657.4	724.9	116.3	743.2	988.6	1,514.0	1,829.8
1990-91	578.3	600.2	713.6	782.3	122.0	621.9	876.6	1,455.4	1,780.8
1991-92	591.5	607.5	693.4	748.5	125.1	310.3	484.1	1,127.5	1,357.6
1992-93	647.2	660.9	743.8	780.6	127.1	297.9	570.9	1,166.3	1,478.6
1993-94	719.1	746.4	828.9	876.3	132.0	217.7	462.1	1,177.2	1,470.4
QUARTERLY (\$ million)									
1992 - 93 -									
March	155.0	157.2	182.7	189.4	25.6	56.0	111.3	264.1	326.3
June	171.3	176.6	200.6	211.8	35.9	62.3	140.9	296.6	388.7
1993 - 94 -									
September	197.3	203.8	224.0	235.7	32.3	59.7	134.7	315.9	402.8
December	178.8	187.6	208.4	222.9	36.5	54.6	119.6	299.4	378.9
March	167.4	172.2	192.3	202.3	32.4	50.2	96.8	274.3	331.5
June	175.7	182.9	204.2	215.3	30.8	53.1	111.0	287.5	357.2
1994 - 95 -									
September	185.6	193.5	215.3	230.8	37.4	63.7	113.5	316.1	381.8
December	185.3	195.7	216.0	231.4	35.6	63.0	117.8	313.1	384.7
March	153.7	159.9	180.1	188.5	22.9	56.2	102.9	258.7	314.3

PRODUCTION, SELECTED COMMODITIES
South Australia

Period	Footwear (pairs)	Gas (m megajoules)	Electricity (including NT) ('000 kWh)	Coal (tonnes)	Sawn timber(a) (m3)
ANNUAL					
1985-86	2,209,898	86,893	9,606,839	2,181,713	221,803
1986-87	2,147,468	82,550	9,666,694	2,435,010	194,458
1987-88	1,982,301	83,101	10,137,144	2,566,347	254,453
1988-89	2,052,085	86,546	10,588,647	2,674,215	292,335
1989-90	1,749,112	85,070	10,665,118	2,921,861	228,156
1990-91	1,837,602	73,265	8,878,357	2,441,040	240,193
1991-92	1,852,890	78,210	10,025,649	2,819,880	271,603
1992-93	1,406,178	83,000	10,226,734	2,753,610	317,096
1993-94	1,382,949	89,382	10,560,251	2,643,000	364,961
1994-95	1,430,417	86,123	10,051,056	2,554,560	392,349
PERCENTAGE CHANGE FROM PREVIOUS YEAR					
1986-87	-2.8	-5.0	0.6	11.6	-12.3
1987-88	-7.7	0.7	4.9	5.4	30.9
1988-89	4.0	4.1	4.5	4.2	14.9
1989-90	-15.2	-1.7	0.7	9.3	-22.0
1990-91	5.1	-13.9	-16.8	-16.5	5.3
1991-92	0.8	6.7	12.9	15.5	13.1
1992-93	-24.1	6.1	2.0	-2.4	16.7
1993-94	-1.7	7.7	3.3	-4.0	15.1
1994-95	3.4	-3.6	-4.8	-3.3	7.5
MONTHLY/QUARTERLY (b), ORIGINAL					
1993 - 94 -					
May	122,593	7,173	838,360	239,640	..
June	139,555	7,422	851,000	259,080	98,255
1994 - 95 -					
July	127,210	7,858	885,099	254,640	..
August	129,977	8,529	935,339	229,980	..
September	146,686	7,352	885,856	248,820	97,308
October	130,132	8,074	838,934	105,240	..
November	135,984	7,393	823,049	168,420	..
December	109,496	6,567	845,271	219,240	95,869
January	53,146	6,783	837,610	198,960	..
February	111,711	6,474	833,604	230,340	..
March	148,345	7,088	829,113	210,780	94,383
April	88,951	5,409	733,508	238,680	..
May	119,883	7,095	783,073	205,740	..
June	128,896	7,501	820,600	243,720	104,789
1995 - 96 -					
July	116,044	8,342	878,070	227,340	104,789
PERCENTAGE CHANGE FROM PREVIOUS MONTH/QUARTER (b)					
1993 - 94 -					
June	13.8	3.5	1.5	8.1	8.8
1994 - 95 -					
July	-8.8	5.9	4.0	-1.7	..
August	2.2	8.5	5.7	-9.7	..
September	12.9	-13.8	-5.3	8.2	-1.0
October	-11.3	9.8	-5.3	-57.7	..
November	4.5	-8.4	-1.9	60.0	..
December	-19.5	-11.2	2.7	30.2	-1.5
January	-51.5	3.3	-0.9	-9.3	..
February	110.2	-4.6	-0.5	15.8	..
March	32.8	9.5	-0.5	-8.5	-1.6
April	-40.0	-23.7	-11.5	13.2	..
May	34.8	31.2	6.8	-13.8	..
June	7.5	5.7	4.8	18.5	11.0
1995 - 96 -					
July	-10.0	11.2	7.0	-6.7	..

(a) From Australian softwood logs only.

(b) Sawn timber production data available quarterly only.

PRODUCTION, LIVESTOCK PRODUCTS AND SELECTED COMMODITIES
South Australia

Period	Chicken	Pigmeat	Beef	Mutton	Lamb	Cheese	Wheat flour, other than self-raising
ANNUAL (tonnes)							
1983-84	33,549	34,740	81,172	23,758	31,114	25,226	78,690
1984-85	35,882	36,508	79,111	35,800	30,136	23,273	74,643
1985-86	34,235	37,432	77,898	41,507	31,485	25,086	73,926
1986-87	33,776	40,761	90,283	43,934	32,416	27,438	80,310
1987-88	34,907	36,671	91,701	45,562	34,335	25,497	91,325
1988-89	32,946	40,364	87,160	42,159	36,203	24,704	96,418
1989-90	35,248	40,815	99,699	50,939	38,052	22,774	88,503
1990-91	31,945	38,644	87,036	65,434	32,038	24,522	83,727
1991-92	36,978	34,538	90,661	72,578	29,941	23,494	81,065
1992-93	38,619	38,153	96,338	65,689	39,334	26,140	87,761
1993-94	40,671	38,529	94,395	71,354	45,199	26,674	84,683
1994-95	39,031	33,033	99,121	66,622	36,197	27,205	80,666
PERCENTAGE CHANGE FROM PREVIOUS YEAR							
1984-85	7.0	5.1	-2.5	50.7	-3.1	-7.7	-5.1
1985-86	-4.6	2.5	-1.5	15.9	4.5	7.8	-1.0
1986-87	-1.3	8.9	15.9	5.8	3.0	9.4	8.6
1987-88	3.3	-10.0	1.6	3.7	5.9	-7.1	13.7
1988-89	-5.6	10.1	-5.0	-7.5	5.4	-3.1	5.6
1989-90	7.0	1.1	14.4	20.8	5.1	-7.8	-8.2
1990-91	-9.4	-5.3	-12.7	28.5	-15.8	7.7	-5.4
1991-92	15.8	-10.6	4.2	10.9	-6.5	-4.2	-3.2
1992-93	4.4	10.5	6.3	-9.5	31.4	11.3	8.3
1993-94	5.3	1.0	-2.0	8.6	14.9	2.0	-3.5
1994-95	-4.0	-14.3	5.0	-6.6	-19.9	2.0	-4.7
MONTHLY (tonnes)							
1993 - 94 -							
April	3,859	3,199	7,792	5,654	4,164	1,622	6,031
May	3,238	3,745	8,186	5,798	4,952	1,962	6,789
June	3,648	3,021	5,377	3,411	4,636	1,497	7,660
1994 - 95 -							
July	3,511	2,787	3,793	2,752	3,159	2,177	5,743
August	2,750	3,104	6,061	3,538	3,272	2,433	6,611
September	3,284	2,550	8,132	7,529	3,934	3,016	6,803
October	3,209	3,094	8,284	6,603	2,509	3,676	5,373
November	2,845	3,784	8,927	8,282	3,244	3,116	7,414
December	3,321	2,929	8,859	6,781	2,816	2,486	7,256
January	3,491	2,368	9,623	6,409	2,972	2,905	6,229
February	3,168	2,684	9,445	5,883	3,128	1,781	7,128
March	3,563	2,285	11,089	6,753	3,703	1,230	7,729
April	3,928	2,069	7,764	5,054	2,691	1,927	6,008
May	3,028	3,009	9,421	4,543	2,723	1,662	7,006
June	2,933	2,370	7,723	2,495	2,046	796	7,366
1995 - 96 -							
July	3,465	2,161	3,526	1,967	1,799	n.y.a	6,104
PERCENTAGE CHANGE FROM PREVIOUS MONTH							
1993 - 94 -							
May	-16.1	17.1	5.1	2.5	18.9	21.0	12.6
June	12.7	-19.3	-34.3	-41.2	-6.4	-7.7	12.8
1994 - 95 -							
July	-3.8	-7.7	-29.5	-19.3	-31.9	45.4	-25.0
August	-21.7	11.4	59.8	28.6	3.6	11.8	15.1
September	19.4	-17.8	34.2	112.8	20.2	24.0	2.9
October	-2.3	21.3	1.9	-12.3	-36.2	21.9	-21.0
November	-11.3	22.3	7.8	25.4	29.3	-15.2	38.0
December	16.7	-22.6	-0.8	-18.1	-13.2	-20.2	-2.1
January	5.1	-19.2	8.6	-5.5	5.5	16.9	-14.2
February	-9.3	13.3	-1.8	-8.2	5.2	-38.7	14.4
March	12.5	-14.9	17.4	14.8	18.4	-30.9	8.4
April	10.2	-9.5	-30.0	-25.2	-27.3	56.7	-22.3
May	-22.9	45.4	21.3	-10.1	1.2	-13.8	16.6
June	-3.1	-21.2	-18.0	-45.1	-24.9	-52.1	5.1
1995 - 96 -							
July	18.1	-8.8	-54.3	-21.2	-12.1	n.y.a	-17.1

CONSUMER PRICE INDEX: BY GROUP
Adelaide

<i>Period</i>	<i>Food</i>	<i>Clothing</i>	<i>Housing</i>	<i>Household equipment and operation</i>	<i>Transport- ation</i>	<i>Tobacco and alcohol</i>	<i>Health and personal care</i>	<i>Recreation and education</i>	<i>All groups</i>
ANNUAL AVERAGE (1989-90 = 100)									
1983-84	67.4	64.1	61.8	69.0	64.3	61.6	71.5	66.1	65.8
1984-85	71.2	68.4	68.3	73.2	68.3	67.2	57.8	68.9	68.9
1985-86	77.0	74.0	73.4	78.9	74.8	72.7	63.2	74.9	74.7
1986-87	83.2	81.8	76.9	84.3	83.0	79.4	75.6	82.1	81.5
1987-88	87.6	88.2	79.5	89.9	88.6	85.7	84.0	89.6	87.0
1988-89	95.2	95.3	87.0	95.1	94.2	92.5	90.8	94.6	93.3
1989-90	100.0	100.0	100.0	100.0	100.0	100.0	100.0	100.0	100.0
1990-91	103.8	103.6	104.1	105.4	107.0	112.0	113.4	104.8	106.2
1991-92	106.0	105.3	100.4	107.5	110.5	118.6	127.8	107.7	108.9
1992-93	109.3	107.0	94.3	107.6	115.0	131.2	134.9	110.7	111.2
1993-94	111.7	106.6	92.1	108.0	117.8	141.5	142.7	113.7	113.4
1994-95	115.1	104.9	97.9	109.2	120.2	148.9	151.3	116.3	116.9
PERCENTAGE CHANGE FROM PREVIOUS YEAR, ANNUAL AVERAGE									
1984-85	5.6	6.7	10.5	6.1	6.2	9.1	-19.2	4.2	4.7
1985-86	8.1	8.2	7.5	7.8	9.5	8.2	9.3	8.7	8.4
1986-87	8.1	10.5	4.8	6.8	11.0	9.2	19.6	9.6	9.1
1987-88	5.3	7.8	3.4	6.6	6.7	7.9	11.1	9.1	6.7
1988-89	8.7	8.0	9.4	5.8	6.3	7.9	8.1	5.6	7.2
1989-90	5.0	4.9	14.9	5.2	6.2	8.1	10.1	5.7	7.2
1990-91	3.8	3.6	4.1	5.4	7.0	12.0	13.4	4.8	6.2
1991-92	2.1	1.6	-3.6	2.0	3.3	5.9	12.7	2.8	2.5
1992-93	3.1	1.6	-6.1	0.1	4.1	10.6	5.6	2.8	2.1
1993-94	2.2	-0.4	-2.3	0.4	2.4	7.9	5.8	2.7	2.0
1994-95	3.0	-1.6	6.3	1.1	2.0	5.2	6.0	2.2	3.1
QUARTERLY (1989-90=100.0)									
1992 - 93 -									
March	111.3	107.2	94.0	106.7	114.9	131.3	136.8	111.7	111.6
June	110.4	107.6	93.8	107.3	116.1	136.4	138.9	112.3	112.3
1993 - 94 -									
September	110.4	107.5	93.3	107.5	117.3	138.8	138.7	112.8	112.7
December	111.3	107.1	91.6	108.2	117.6	140.0	138.4	113.0	112.8
March	112.0	106.0	91.6	107.9	117.6	142.6	145.5	114.1	113.6
June	113.0	105.8	91.9	108.2	118.5	144.5	148.2	114.8	114.4
1994 - 95 -									
September	114.5	105.2	92.4	108.3	119.6	144.2	148.3	115.1	114.9
December	114.3	105.1	95.6	108.7	119.8	147.8	148.7	116.2	116.0
March	115.7	104.2	100.8	109.5	119.9	150.2	153.0	117.2	117.8
June	115.7	105.1	102.8	110.2	121.4	153.2	155.3	116.5	118.8
PERCENTAGE CHANGE FROM SAME QUARTER OF PREVIOUS YEAR									
1992 - 93 -									
March	4.6	1.9	-5.8	-0.6	3.6	10.2	2.0	2.7	1.9
June	3.3	1.4	-3.6	-0.7	4.4	14.0	5.5	3.1	2.7
1993 - 94 -									
September	2.9	1.4	-2.2	-0.6	3.2	9.7	5.5	3.6	2.4
December	3.0	-0.1	-2.6	0.1	2.2	7.4	4.7	2.8	1.9
March	0.6	-1.1	-2.6	1.1	2.3	8.6	6.4	2.1	1.8
June	2.4	-1.7	-2.0	0.8	2.1	5.9	6.7	2.2	1.9
1994 - 95 -									
September	3.7	-2.1	-1.0	0.7	2.0	3.9	6.9	2.0	2.0
December	2.7	-1.9	4.4	0.5	1.9	5.6	7.4	2.8	2.8
March	3.3	-1.7	10.0	1.5	2.0	5.3	5.2	2.7	3.7
June	2.4	-0.7	11.9	1.8	2.4	6.0	4.8	1.5	3.8
PERCENTAGE CHANGE FROM PREVIOUS QUARTER									
1992 - 93 -									
June	-0.8	0.4	-0.2	0.6	1.0	3.9	1.5	0.5	0.6
1993 - 94 -									
September	0.0	-0.1	-0.5	0.2	1.0	1.8	-0.1	0.4	0.4
December	0.8	-0.4	-1.8	0.7	0.3	0.9	-0.2	0.2	0.1
March	0.6	-1.0	0.0	-0.3	0.0	1.9	5.1	1.0	0.7
June	0.9	-0.2	0.3	0.3	0.8	1.3	1.9	0.6	0.7
1994 - 95 -									
September	1.3	-0.6	0.5	0.1	0.9	-0.2	0.1	0.3	0.4
December	-0.2	-0.1	3.5	0.4	0.2	2.5	0.3	1.0	1.0
March	1.2	-0.9	5.4	0.7	0.1	1.6	2.9	0.9	1.6
June	0.0	0.9	2.0	0.6	1.3	2.0	1.5	-0.6	0.8

**AVERAGE RETAIL PRICES OF SELECTED CONSUMER ITEMS
Adelaide (cents)**

Item	Unit	Quarter				
		June 1994	Sept. 1994	Dec. 1994	Mar. 1995	June 1995
Milk, carton, supermarket sales	1 litre	97	101	102	104	110
Cheese, processed, sliced, wrapped	500g	348	330	333	317	323
Butter	500g	156	161	159	148	151
Bread, white loaf, sliced, supermarket sales	680g	126	125	128	138	139
Self-raising flour	2kg	192	205	195	216	204
Beef: Rump steak	1kg	1,164	1,180	1,124	1,139	1,121
Corned silverside	1kg	651	672	665	653	651
Lamb: Leg	1kg	532	507	476	495	533
Loin Chops	1kg	699	666	637	677	699
Forequarter chops	1kg	499	500	448	494	507
Pork: Leg	1kg	569	598	596	600	589
Loin Chops	1kg	743	753	747	745	736
Chicken, frozen	1kg	329	325	331	328	323
Bacon, middle rashers	250g pkt	290	260	244	309	291
Sausages	1kg	364	373	370	373	370
Potatoes	1kg	63	60	95	100	87
Onions	1kg	95	100	109	109	118
Peaches, canned	825g	191	194	185	190	186
Eggs, 55g	doz	166	163	170	181	185
Sugar, white	2kg	190	199	191	189	180
Tea	250g	164	159	165	164	165
Coffee, instant, jar	150g	384	512	521	572	546
Margarine, polyunsaturated	500g	136	140	138	141	152
Petrol: Leaded(a)	1 litre	70.7	71.5	70.8	71.3	72.0
Unleaded(b)	1 litre	69.6	69.7	68.7	69.1	69.8

(a) Description change only, from super grade to leaded.

(b) Introduced from March quarter 1994.

**ESTIMATED RESIDENT POPULATION AND COMPONENTS OF POPULATION CHANGE
South Australia**

Period	Components of population change					Total increase	Population at end of period
	Live births	Deaths	Natural increase	Net migration			
				Interstate	Overseas (a)		
ANNUAL							
1983-84	20,118	9,799	10,319	553	3,969	14,273	1,360,048
1984-85	19,901	10,204	9,697	-2,317	4,329	11,149	1,371,197
1985-86	19,657	10,427	9,230	-1,417	5,084	11,353	1,382,550
1986-87	19,628	10,577	9,051	-3,977	6,200	10,214	1,392,764
1987-88	19,288	10,799	8,489	-1,240	5,952	12,145	1,404,909
1988-89	19,528	10,814	8,664	-221	6,665	14,120	1,419,029
1989-90	19,653	11,329	8,253	-252	5,762	13,027	1,432,056
1990-91	19,966	11,120	8,767	1,545	4,619	14,243	1,446,299
1991-92	19,530	11,035	8,532	-133	2,897	11,296	1,457,595
1992-93	19,686	11,163	8,403	-4,650	1,546	5,299	1,462,894
1993-94	20,030	11,733	8,230	-3,466	2,126	6,890	1,469,784
MONTHLY/QUARTERLY							
1993 - 94 -							
April	1,490	742
May	1,757	1,040
June	1,589	1,165	1,955	-822	46	1,179	1,469,784
1994 - 95 -							
July	1,409	1,040
August	1,789	1,165
September	1,333	1,005	1,755	-1,380	796	1,171	1,470,955
October	1,546	942
November	2,013	1,025
December	1,525	963	1,886	1,249	279	916	1,471,871
January	1,757	910
February	1,408	656
March	1,870	935	2,534	n.y.a.	n.y.a.	n.y.a.	n.y.a.
April	1,393	819
May	1,805	1,090
June	1,709	926	2,072	n.y.a.	n.y.a.	n.y.a.	n.y.a.
1995 - 96 -							
July	1,503	911
August	1,604	1,095

(a) Incl.

LABOUR FORCE STATUS OF THE CIVILIAN POPULATION
South Australia

Period	Employed Full-time Males	Employed Full-time Females	Employed Part-time Males	Employed Part-time Females	Employed Total Males	Employed Total Females	Unem- ployed Males	Unem- ployed Females	Labour Force Males	Labour Force Females
ANNUAL AVERAGE ('000)										
1985-86	336.3	134.3	24.4	98.9	360.7	233.2	32.2	22.4	392.9	255.6
1986-87	337.1	137.0	25.4	106.6	362.5	243.6	35.6	24.5	398.1	268.1
1987-88	334.4	137.4	29.3	111.6	363.7	249.0	35.1	24.9	398.8	273.9
1988-89	345.5	145.3	29.7	115.8	375.2	261.1	32.2	22.5	407.4	283.6
1989-90	352.0	149.3	31.5	119.8	383.5	269.1	28.5	20.9	412.0	290.0
1990-91	345.2	148.4	34.1	125.7	379.3	274.1	37.8	25.3	417.1	299.4
1991-92	323.3	145.7	37.5	121.6	360.8	267.3	50.0	29.3	410.8	296.6
1992-93	322.2	143.2	39.2	126.8	361.4	270.0	51.9	29.9	413.3	299.9
1993-94	322.0	146.3	40.0	127.0	362.0	273.3	47.3	29.9	409.3	303.2
1994-95	323.1	151.5	42.6	131.3	365.7	282.8	44.6	28.7	410.2	311.5
PERCENTAGE CHANGE FROM PREVIOUS YEAR, ANNUAL AVERAGE										
1986-87	0.2	2.0	4.1	7.8	0.5	4.5	10.6	9.4	1.3	4.9
1987-88	-0.8	0.3	15.4	4.7	0.3	2.2	-1.4	1.6	0.2	2.2
1988-89	3.3	5.7	1.4	3.8	3.2	4.9	-8.3	-9.6	2.2	3.5
1989-90	1.9	2.8	6.1	3.5	2.2	3.1	-11.5	-7.1	1.1	2.3
1990-91	-1.9	-0.6	8.3	4.9	-1.1	1.9	32.6	21.1	1.2	3.2
1991-92	-6.3	-1.8	10.0	-3.3	-4.9	-2.5	32.3	15.8	-1.5	-0.9
1992-93	-0.3	-1.7	4.5	4.3	0.2	1.0	3.8	2.0	0.6	1.1
1993-94	-0.1	2.2	2.0	0.2	0.2	1.2	-8.9	0.0	-1.0	1.1
1994-95	0.3	3.5	6.4	3.4	1.0	3.5	-5.8	-3.9	0.2	2.7
MONTHLY, ORIGINAL ('000)										
1994 - 95 -										
July	325.5	146.7	40.5	136.3	366.0	283.0	42.5	30.4	408.5	313.3
August	325.2	146.2	37.6	133.1	362.8	279.4	44.4	28.7	407.2	308.1
September	328.5	151.4	36.9	133.0	365.5	284.4	44.6	30.2	410.0	314.6
October	329.2	151.6	37.7	128.0	366.9	279.6	43.6	29.5	410.5	309.1
November	322.8	155.5	41.5	126.3	364.2	281.9	42.2	29.7	406.5	311.6
December	322.3	153.2	41.7	132.0	364.0	285.2	45.1	28.9	409.0	314.1
January	320.2	153.0	40.9	122.3	361.1	275.3	50.4	26.0	411.5	301.4
February	328.2	154.7	43.6	127.9	371.8	282.6	45.5	30.9	417.3	313.4
March	317.8	151.5	47.8	130.7	365.6	282.2	43.7	30.4	409.3	312.5
April	320.4	149.4	47.7	132.8	368.1	282.2	42.7	28.8	410.8	311.0
May	321.6	154.9	46.3	133.5	367.9	288.3	43.2	26.1	411.1	314.4
June	315.6	149.3	48.7	140.0	364.2	289.3	47.0	25.1	411.2	314.3
1995 - 96 -										
July	323.1	150.3	45.7	137.9	368.8	288.2	41.5	25.0	410.3	313.2
August	323.2	149.1	45.7	139.2	369.0	288.3	43.4	24.1	412.4	312.4
MONTHLY, TREND ('000)										
1994 - 95 -										
July	327.4	147.5	37.8	131.8	365.2	279.3	44.7	31.7	410.0	311.0
August	327.8	148.8	37.7	132.0	365.5	280.8	44.6	31.7	409.3	312.5
September	327.3	150.1	38.0	131.5	365.3	281.6	44.5	31.1	409.9	312.7
October	326.2	151.2	38.6	130.6	364.8	281.8	44.5	30.1	409.2	311.9
November	324.5	151.7	39.8	129.8	364.3	281.5	44.4	29.0	408.6	310.5
December	322.9	152.0	41.3	129.0	364.2	281.0	44.2	28.2	408.4	309.2
January	321.7	152.1	43.0	129.8	364.7	280.9	44.0	27.7	408.7	308.6
February	320.8	152.2	44.5	129.3	365.4	281.4	44.0	27.4	409.4	308.8
March	320.4	152.4	45.8	130.2	366.2	282.5	44.2	27.3	410.4	309.9
April	320.3	152.7	46.5	131.5	366.9	284.2	44.5	27.3	411.4	311.5
May	320.5	152.9	47.1	133.1	367.5	286.0	44.7	27.2	412.2	313.3
June	321.0	152.9	47.1	134.9	368.2	287.8	44.8	26.9	413.0	314.8
1995 - 96 -										
July	321.9	152.3	47.2	137.1	369.1	289.4	44.8	26.6	413.8	316.0
August	322.8	151.9	46.9	138.6	367.8	290.5	44.7	26.1	414.4	316.7
PERCENTAGE CHANGE FROM PREVIOUS MONTH, TREND										
1994 - 95 -										
August	0.1	0.9	-0.3	0.2	0.1	0.5	-0.2	0.0	-0.2	0.5
September	-0.2	0.9	0.8	-0.4	-0.1	0.3	-0.2	-1.9	0.1	0.1
October	-0.3	0.7	1.6	-0.7	-0.1	0.1	0.0	-3.2	-0.2	-0.3
November	-0.5	0.3	3.1	-0.6	-0.1	-0.1	-0.2	-3.7	-0.1	-0.4
December	-0.5	0.2	3.8	-0.6	0.0	-0.2	-0.5	-2.8	0.0	-0.4
January	-0.4	0.1	4.1	0.6	0.1	0.0	-0.5	-1.8	0.1	-0.2
February	-0.3	0.1	3.5	-0.4	0.2	0.2	0.0	-1.1	0.2	0.1
March	-0.1	0.1	2.9	0.7	0.2	0.4	0.5	-0.4	0.2	0.4
April	0.0	0.2	1.5	1.0	0.2	0.6	0.7	0.0	0.2	0.5
May	0.1	0.1	1.3	1.2	0.2	0.6	0.4	-0.4	0.2	0.6
June	0.2	0.0	0.0	1.4	0.2	0.6	0.2	-1.1	0.2	0.5
1995 - 96 -										
July	0.3	-0.4	0.2	1.6	0.2	0.6	0.0	-1.1	0.2	0.4
August	0.3	-0.3	-0.6	1.1	-0.4	0.4	-0.2	-1.9	-65.8	0.2

LABOUR FORCE STATUS OF THE CIVILIAN POPULATION AGED 15 AND OVER
South Australia

Period	Civilian Population aged 15 and over ('000)	Civilian Population aged 15 and over ('000)	Unemployment rate Ages 15-19 (%)	Unemployment rate All Ages (%)	Unemployment rate All Ages (%)	Unemployment rate All Ages (%)	Participation rate (%)	Participation rate (%)	Participation rate (%)
	Males	Females	Persons	Males	Females	Persons	Males	Females	Persons
ANNUAL AVERAGE									
1984-85	518.8	538.9	22.1	9.0	9.6	9.2	74.9	45.4	59.9
1985-86	526.9	545.6	20.6	8.2	8.8	8.4	75.6	46.8	60.5
1986-87	534.8	552.4	22.1	8.9	9.1	9.0	74.4	48.5	61.3
1987-88	542.4	560.0	20.8	8.8	9.1	8.9	73.5	48.9	61.0
1988-89	547.9	566.9	17.8	7.9	7.9	7.9	74.3	50.0	62.0
1989-90	552.4	573.4	16.2	6.9	7.2	7.1	74.6	50.6	62.4
1990-91	558.3	579.8	19.2	9.1	8.4	8.8	74.7	51.6	63.0
1991-92	563.9	585.4	25.0	12.1	9.9	11.2	72.9	50.7	61.6
1992-93	567.4	588.9	26.6	12.6	10.0	11.5	72.8	51.0	61.7
1993-94	570.6	592.0	28.3	11.5	9.8	10.8	71.7	51.2	61.3
1994-95	573.7	594.7	25.2	10.9	9.2	10.2	71.5	52.4	61.8
PERCENTAGE CHANGE FROM PREVIOUS YEAR, ANNUAL AVERAGE									
1985-86	1.6	1.2
1986-87	1.5	1.2							
1987-88	1.4	1.4							
1988-89	1.0	1.2							
1989-90	0.8	1.1							
1990-91	1.1	1.1							
1991-92	1.0	1.0							
1992-93	0.6	0.6							
1993-94	0.6	0.6							
1994-95	0.6	0.5							
MONTHLY, ORIGINAL									
1993 - 94 - June	572.1	593.3	28.8	11.0	10.2	10.6	70.9	51.4	61.0
1994 - 95 - July	572.4	593.6	25.3	10.4	9.7	10.1	71.4	52.8	61.9
August	572.7	593.8	27.3	10.9	9.3	10.2	71.1	51.9	61.3
September	572.9	594.0	28.3	10.9	9.6	10.3	71.6	53.0	62.1
October	573.2	594.2	29.3	10.6	9.6	10.2	71.6	52.0	61.6
November	573.4	594.4	26.1	10.4	9.5	10.0	70.9	52.4	61.5
December	573.6	594.6	25.6	11.0	9.2	10.2	71.3	52.8	61.9
January	573.9	594.8	24.3	12.3	8.6	10.7	71.7	50.7	61.0
February	574.2	595.0	25.1	10.9	9.8	10.4	72.7	52.7	62.5
March	574.4	595.2	21.3	10.7	9.7	10.3	71.3	52.5	61.7
April	574.6	595.4	23.9	10.4	9.2	9.9	71.5	52.2	61.7
May	574.7	595.6	22.0	10.5	8.3	9.6	71.5	52.8	62.0
June	574.9	595.8	24.3	11.4	8.0	9.9	71.5	52.8	62.0
1995 - 96 - July	575.0	595.9	23.8	10.1	8.0	9.2	71.3	52.6	61.8
August	575.1	596.1	27.2	10.5	7.7	9.3	71.7	52.4	61.9
MONTHLY, TREND									
1993 - 94 - June				11.0	10.2	10.7	71.5	52.0	61.6
1994 - 95 - July				10.9	10.2	10.6	71.6	52.4	61.8
August				10.9	10.1	10.6	71.6	52.6	61.9
September				10.9	10.0	10.5	71.5	52.6	61.9
October				10.9	9.7	10.3	71.4	52.5	61.8
November				10.9	9.4	10.2	71.3	52.2	61.6
December				10.8	9.1	10.1	71.2	52.0	61.4
January				10.8	9.0	10.0	71.2	51.9	61.4
February				10.8	8.9	9.9	71.3	51.9	61.4
March				10.8	8.8	9.9	71.4	52.1	61.6
April				10.8	8.8	9.9	71.6	52.3	61.8
May				10.8	8.7	9.9	71.7	52.6	62.0
June				10.9	8.6	9.9	71.8	52.8	62.2
1995 - 96 - July				10.8	8.3	9.8	72.0	53.0	62.3
August				10.8	8.4	9.7	72.1	53.1	62.4

**LABOUR FORCE STATUS OF THE CIVILIAN POPULATION AGED 15 AND OVER
ADELAIDE STATISTICAL DIVISION AND THE BALANCE OF SOUTH AUSTRALIA**

<i>Period</i>	<i>Employed Males ('000)</i>	<i>Employed Females ('000)</i>	<i>Unem- ployed Males ('000)</i>	<i>Unem- ployed Females ('000)</i>	<i>Unemploy- ment rate Males (%)</i>	<i>Unemploy- ment rate Females (%)</i>	<i>Participa- tion rate Males (%)</i>	<i>Participa- tion rate Females (%)</i>
ADELAIDE STATISTICAL DIVISION								
1993 - 94 -								
October	259.3	200.5	37.8	23.2	12.7	10.4	71.0	50.3
November	260.8	204.2	37.3	22.3	12.5	9.9	71.2	50.9
December	266.7	208.3	36.4	24.3	12.0	10.4	72.3	52.2
January	261.0	199.9	41.4	25.9	13.7	11.5	72.1	50.7
February	261.3	202.7	39.4	25.8	13.1	11.3	71.6	51.2
March	267.0	204.6	35.7	24.6	11.8	10.7	72.0	51.4
April	264.3	205.5	34.0	20.8	11.4	9.2	70.9	50.7
May	265.2	207.0	34.0	24.3	11.4	10.5	71.1	51.8
June	263.3	204.2	32.7	23.6	11.0	10.4	70.3	51.0
1994 - 95 -								
July	265.6	210.8	33.6	24.0	11.2	10.2	71.1	52.5
August	260.9	209.8	36.6	23.3	12.3	10.0	70.6	52.1
November	261.7	212.6	33.2	23.1	11.3	9.8	69.9	52.6
February	267.9	209.6	35.8	24.7	11.8	10.6	71.9	52.3
May	264.7	212.0	34.6	22.0	11.6	9.4	70.8	52.2
1995 - 96 -								
August	263.1	215.3	33.9	19.4	11.4	8.3	70.2	52.3
ASD: NORTHERN ADELAIDE								
1993 - 94 -								
October	78.4	56.4	10.8	8.6	12.1	13.2	73.3	50.4
November	77.8	56.2	11.4	8.3	12.8	12.9	73.5	50.0
December	78.9	57.2	11.3	9.8	12.5	14.6	72.7	51.5
January	78.9	56.1	11.7	10.2	12.9	15.4	73.0	50.7
February	79.3	60.9	12.1	9.1	13.2	13.0	74.6	52.9
March	82.1	59.0	10.7	8.9	11.5	13.0	75.8	52.1
April	80.1	60.4	10.7	7.0	11.8	10.4	74.1	52.0
May	82.7	59.9	9.7	9.1	10.5	13.1	75.3	53.1
June	81.6	58.8	9.9	9.2	10.8	13.5	75.0	51.5
1994 - 95 -								
July	84.7	62.8	9.6	8.5	10.1	11.9	75.9	53.8
August	83.0	62.8	11.7	7.6	12.4	10.8	75.9	52.5
November	80.7	62.8	12.9	6.9	13.8	9.9	73.0	51.6
February	82.8	63.7	13.4	8.1	13.9	11.3	74.7	54.8
May	82.7	60.9	12.1	8.1	12.7	11.7	75.8	52.5
1995 - 96 -								
August	81.6	64.8	14.1	7.7	14.8	10.6	75.2	53.4
ASD: WESTERN ADELAIDE								
1993 - 94 -								
October	45.4	36.9	11.4	6.1	20.1	14.1	66.2	45.8
November	49.0	38.8	10.7	5.5	17.9	12.5	67.5	47.5
December	50.1	39.3	10.2	4.7	17.0	10.6	68.5	46.0
January	51.4	36.1	10.7	6.8	17.2	15.9	68.7	45.8
February	48.4	35.7	10.7	5.4	18.0	13.2	67.5	44.1
March	48.2	38.3	9.7	4.7	16.8	10.9	67.4	45.0
April	49.3	37.6	10.2	4.9	17.2	11.6	68.1	44.1
May	50.7	39.5	9.2	4.3	15.3	9.9	68.0	46.4
June	49.9	37.5	9.5	4.1	16.0	9.8	67.2	44.5
1994 - 95 -								
July	48.3	37.6	9.1	5.2	15.8	12.2	66.6	46.1
August	48.2	38.8	9.2	4.6	16.0	10.7	66.1	46.7
November	47.5	39.3	7.2	6.4	13.2	13.9	64.7	48.2
February	45.7	39.0	5.9	5.4	11.4	12.1	64.0	46.5
May	48.7	38.4	6.5	4.5	11.8	10.5	67.1	46.9
1995 - 96 -								
August	47.8	36.9	7.6	3.4	13.8	8.4	65.9	46.7

**LABOUR FORCE STATUS OF THE CIVILIAN POPULATION AGED 15 AND OVER
ADELAIDE STATISTICAL DIVISION AND THE BALANCE OF SOUTH AUSTRALIA - continued**

<i>Period</i>	<i>Employed Males (000)</i>	<i>Employed Females (000)</i>	<i>Unem- ployed Males (000)</i>	<i>Unem- ployed Females (000)</i>	<i>Unemploy- ment rate Males (%)</i>	<i>Unemploy- ment rate Females (%)</i>	<i>Participa- tion rate Males (%)</i>	<i>Participa- tion rate Females (%)</i>
ASD: EASTERN ADELAIDE								
1993 - 94 -								
October	55.3	44.0	5.6	2.5	9.2	5.3	73.3	51.2
November	52.5	43.1	5.7	4.0	9.8	8.5	70.4	52.1
December	55.8	47.1	4.8	4.2	7.9	8.2	72.5	57.2
January	54.3	46.0	6.3	3.6	10.4	7.3	72.6	54.1
February	54.9	45.2	6.5	4.1	10.6	8.3	71.0	55.1
March	57.9	46.7	5.4	3.6	8.5	7.2	70.4	54.1
April	56.3	48.7	4.6	3.0	7.6	5.8	70.6	54.4
May	54.2	47.7	6.0	4.4	9.9	8.4	69.5	54.8
June	56.0	49.7	4.4	3.4	7.3	6.4	68.0	56.3
1994 - 95 -								
July	55.0	51.0	6.3	3.7	10.3	6.8	69.2	58.3
August	56.0	50.5	6.2	3.8	9.9	7.0	71.8	58.8
November	58.8	50.7	5.4	2.4	8.5	4.5	72.1	59.3
February	59.4	45.8	7.4	3.8	11.0	7.7	74.2	54.5
May	58.5	45.2	6.5	3.5	10.0	7.2	69.7	53.6
1995 - 96 -								
August	56.4	46.6	4.8	2.5	7.9	5.2	70.9	53.6
ASD: SOUTHERN ADELAIDE								
1993 - 94 -								
October	80.2	63.2	9.9	6.1	11.0	8.8	70.4	52.7
November	81.5	66.1	9.6	4.5	10.5	6.3	71.9	52.2
December	81.8	64.7	10.0	5.6	10.9	8.0	74.4	54.0
January	76.3	61.8	12.7	5.2	14.3	7.8	73.2	51.7
February	78.7	60.9	10.1	7.2	11.4	10.6	71.9	52.0
March	78.8	60.6	9.9	7.4	11.2	10.9	72.8	53.2
April	78.6	58.9	8.4	5.8	9.7	9.0	70.1	51.6
May	77.6	59.9	9.1	6.6	10.5	9.9	70.3	52.1
June	75.9	58.2	8.9	6.9	10.5	10.6	69.6	51.2
1994 - 95 -								
July	77.7	59.3	8.7	6.5	10.0	9.9	70.5	51.5
August	73.7	57.8	9.5	7.3	11.4	11.2	67.4	50.8
November	74.7	59.8	7.6	7.5	9.3	11.1	68.5	52.4
February	80.0	61.1	9.2	7.5	10.4	10.9	72.5	52.5
May	74.8	67.5	9.5	5.9	11.3	8.0	69.0	54.6
1995 - 96 -								
August	77.4	66.9	7.3	5.7	8.6	7.9	67.6	53.9
BALANCE OF SOUTH AUSTRALIA (Excludes ASD)								
1993 - 94 -								
October	101.9	69.2	11.0	6.6	9.7	8.7	74.6	51.8
November	101.9	69.5	10.2	6.6	9.1	8.6	74.1	52.0
December	101.2	70.7	11.9	7.6	10.5	9.7	74.8	53.4
January	100.4	68.4	12.7	7.7	11.2	10.1	74.8	52.0
February	98.3	69.6	10.7	7.7	9.8	10.0	72.1	52.8
March	97.5	68.4	11.7	8.1	10.7	10.5	72.2	52.2
April	97.6	69.0	10.5	6.7	9.8	8.8	71.5	51.6
May	98.6	67.3	9.8	6.7	9.0	9.1	71.6	50.5
June	97.8	69.8	11.9	7.5	10.8	9.7	72.5	52.8
1994 - 95 -								
July	100.4	72.2	8.8	6.4	8.1	8.1	72.2	53.6
August	101.9	69.6	7.8	5.5	7.1	7.3	72.6	51.2
November	102.6	69.2	9.0	6.6	8.1	8.7	73.7	51.7
February	103.9	73.0	9.6	6.1	8.5	7.7	74.8	53.8
May	103.2	76.3	8.6	4.1	7.7	5.1	73.5	54.6
1995 - 96 -								
August	105.9	73.0	9.5	4.7	8.2	6.0	75.8	52.7

AVERAGE WEEKLY EARNINGS OF EMPLOYEES
South Australia

Period	Full-time adults						All employees		
	Ordinary time earnings			Total earnings			Males	Females	Persons
	Males	Females	Persons	Males	Females	Persons			
ANNUAL AVERAGE (\$ per week)									
1983-84	358.30	294.50	339.90	377.60	300.20	355.20	346.60	218.30	294.00
1984-85	381.90	319.30	364.80	407.40	325.80	385.10	367.20	238.70	316.20
1985-86	406.30	340.50	388.30	431.80	346.60	408.40	389.00	252.70	334.50
1986-87	431.80	363.70	412.20	455.90	370.20	431.20	411.80	268.90	352.20
1987-88	458.60	389.70	438.40	485.00	397.00	459.20	440.10	295.10	379.60
1988-89	481.50	424.30	465.70	517.60	435.10	494.90	473.40	315.10	408.50
1989-90	517.50	454.90	499.40	560.70	466.50	533.50	511.60	338.00	437.80
1990-91	561.30	486.10	537.90	598.90	496.10	566.90	546.70	358.10	462.00
1991-92	588.40	524.10	567.80	624.90	534.00	595.80	564.80	386.90	483.70
1992-93	610.10	534.90	585.40	646.40	546.80	613.70	560.00	382.60	477.40
1993-94	625.10	547.60	600.00	667.50	560.10	632.70	595.10	396.60	503.30
1994-95	632.70	559.10	608.20	681.70	572.50	645.30	599.90	411.90	513.40
PERCENTAGE CHANGE FROM PREVIOUS YEAR									
1984-85	6.6	8.4	7.3	7.9	8.5	8.4	5.9	9.3	7.6
1985-86	6.4	6.6	6.4	6.0	6.4	6.1	5.9	5.9	5.8
1986-87	6.3	6.8	6.2	5.6	6.8	5.6	5.9	6.4	5.3
1987-88	6.2	7.1	6.4	6.4	7.2	6.5	6.9	9.7	7.8
1988-89	5.0	8.9	6.2	6.7	9.6	7.8	7.6	6.8	7.6
1989-90	7.5	7.2	7.2	8.3	7.2	7.8	8.1	7.3	7.2
1990-91	8.5	6.9	7.7	6.8	6.3	6.3	6.9	5.9	5.5
1991-92	4.8	7.8	5.6	4.3	7.6	5.1	3.3	8.0	4.7
1992-93	3.7	2.1	3.1	3.4	2.4	3.0	-0.8	-1.1	-1.3
1993-94	2.5	2.4	2.5	3.3	2.4	3.1	6.3	3.7	5.4
1994-95	1.2	2.1	1.4	2.1	2.2	2.0	0.8	3.9	2.0
QUARTERLY (\$ per week)									
1992 - 93 -									
20 November	610.30	532.80	585.00	647.60	543.90	613.70	547.10	377.00	469.90
19 February	610.10	533.30	584.80	648.50	543.90	614.10	559.50	381.60	477.70
20 May	610.00	543.70	589.00	645.10	557.10	617.20	565.50	385.30	484.50
1993 - 94 -									
20 August	631.00	546.90	603.30	673.30	559.50	635.80	599.70	394.20	503.10
19 November	626.50	543.20	599.40	667.10	554.90	630.70	583.50	386.70	492.50
18 February	619.90	548.80	597.30	665.30	558.80	631.50	601.30	405.50	512.80
20 May	622.90	551.40	599.80	664.30	567.10	632.90	595.80	399.80	504.80
1994 - 95 -									
19 August	628.20	553.70	602.60	674.20	566.70	637.20	591.40	410.80	507.40
18 November	619.10	558.00	598.60	667.50	572.80	635.70	586.90	410.20	505.10
17 February	648.40	560.80	619.90	699.90	572.80	658.50	620.10	415.80	527.90
19 May	635.10	563.90	611.70	685.20	577.80	649.90	601.10	410.80	513.30
PERCENTAGE CHANGE FROM CORRESPONDING REFERENCE DATE IN PREVIOUS YEAR									
1993 - 94 -									
19 November	2.7	2.0	2.5	3.0	2.0	2.8	6.7	2.6	4.8
18 February	1.6	2.9	2.1	2.6	2.7	2.8	7.5	6.3	7.3
20 May	2.1	1.4	1.8	3.0	1.8	2.5	5.4	3.8	4.2
1994 - 95 -									
19 August	-0.4	1.2	-0.1	0.1	1.3	0.2	-1.4	4.2	0.9
18 November	-1.2	2.7	-0.1	0.1	3.2	0.8	0.6	6.1	2.6
17 February	4.6	2.2	3.8	5.2	2.5	4.3	3.1	2.5	2.9
19 May	2.0	2.3	2.0	3.1	1.9	2.7	0.9	2.8	1.7
PERCENTAGE CHANGE FROM PREVIOUS REFERENCE DATE									
1992 - 93 -									
19 February	0.0	0.1	0.0	0.1	0.0	0.1	2.3	1.2	1.7
20 May	0.0	2.0	0.7	-0.5	2.4	0.5	1.1	1.0	1.4
1993 - 94 -									
20 August	3.4	0.6	2.4	4.4	0.4	3.0	6.0	2.3	3.8
19 November	-0.7	-0.7	-0.6	-0.9	-0.8	-0.8	-2.7	-1.9	-2.1
18 February	-1.1	1.0	-0.4	-0.3	0.7	0.1	3.1	4.9	4.1
20 May	0.5	0.5	0.4	-0.2	1.5	0.2	-0.9	-1.4	-1.6
1994 - 95 -									
19 August	0.9	0.4	0.5	1.5	-0.1	0.7	-0.7	2.8	0.5
18 November	-1.4	0.8	-0.7	-1.0	1.1	-0.2	-0.8	-0.1	-0.5
17 February	4.7	0.5	3.6	4.9	0.0	3.6	5.7	1.4	4.5
19 May	-2.1	0.6	-1.3	-2.1	0.9	-1.3	-3.1	-1.2	-2.8

FINANCE COMMITMENTS
South Australia

<i>Secured housing finance commitments to individuals</i>							
<i>Construction and purchase of dwellings</i>							
<i>Period</i>	<i>Number of dwelling units</i>	<i>Amount (\$ million)</i>	<i>Alterations and additions (\$ million)</i>	<i>Personal finance commitments (\$ million)</i>	<i>Commercial finance commitments (\$ million)</i>	<i>Lease finance commitments (\$ million)</i>	
ANNUAL							
1983-84	27,968	894.0	45.2	n.a.	n.a.	n.a.	
1984-85	28,484	1,127.6	48.2	n.a.	n.a.	n.a.	
1985-86	21,714	920.1	48.9	1,203.9	3,492.7	339.8	
1986-87	21,658	965.5	47.1	1,222.4	4,242.8	334.5	
1987-88	26,582	1,266.6	47.0	1,448.9	6,486.6	392.1	
1988-89	29,977	1,574.2	51.4	1,534.1	7,285.5	512.4	
1989-90	25,650	1,438.2	45.8	1,525.7	6,926.4	445.4	
1990-91	28,694	1,731.3	58.8	1,503.6	6,257.0	323.2	
1991-92	31,765	2,083.8	88.8	1,456.7	6,666.4	256.2	
1992-93	36,960	2,569.5	102.8	1,656.8	5,122.4	249.5	
1993-94	45,725	3,387.9	221.8	1,840.5	5,467.2	250.6	
1994-95	36,414	2,878.6	242.2	2,152.2	5,752.1	271.5	
PERCENTAGE CHANGE FROM PREVIOUS YEAR							
1984-85	1.8	26.1	6.6	n.a.	n.a.	n.a.	
1985-86	-23.8	-18.4	1.5	n.a.	n.a.	n.a.	
1986-87	-0.3	4.9	-3.7	1.5	21.5	-1.6	
1987-88	22.7	31.2	-0.2	18.5	52.9	17.2	
1988-89	12.8	24.3	9.4	5.9	12.3	30.7	
1989-90	-14.4	-8.6	-10.9	-0.5	-4.9	-13.1	
1990-91	11.9	20.4	28.4	-1.4	-9.7	-27.4	
1991-92	10.7	20.4	51.0	-3.1	6.5	-20.7	
1992-93	16.4	23.3	15.8	13.7	-23.2	-2.6	
1993-94	23.7	31.9	115.8	11.1	6.7	0.5	
1994-95	-20.4	-15.0	9.2	16.9	5.2	8.3	
MONTHLY							
1993 - 94 -							
April	3,702	287.5	22.6	138.8	466.1	17.7	
May	4,011	310.7	20.6	161.5	438.4	22.6	
June	4,086	317.8	19.9	169.3	595.3	36.1	
1994 - 95 -							
July	3,419	263.8	20.6	163.2	432.6	26.5	
August	3,580	276.2	25.0	170.0	701.4	25.6	
September	3,209	248.5	17.5	169.2	361.3	24.5	
October	3,051	234.0	20.1	163.5	417.6	20.6	
November	3,228	252.4	20.9	191.0	493.2	19.7	
December	2,839	220.6	20.6	174.5	575.3	23.0	
January	2,643	210.3	15.6	160.8	348.7	21.4	
February	2,629	215.4	20.9	169.6	411.0	17.3	
March	3,228	260.7	21.4	206.7	468.1	20.8	
April	2,390	192.8	19.0	156.6	397.4	14.3	
May	2,917	236.5	18.9	193.6	588.8	26.0	
June	3,281	267.4	21.7	233.5	556.7	31.7	
1995 - 96 -							
July	3,001	242.2	19.3	192.7	n.y.a.	27.4	
PERCENTAGE CHANGE FROM PREVIOUS MONTH							
1993 - 94 -							
May	8.3	8.1	-8.8	16.4	-5.9	27.7	
June	1.9	2.3	-3.4	4.8	35.8	59.7	
1994 - 95 -							
July	-16.3	-17.0	3.5	-3.6	-27.3	-26.6	
August	4.7	4.7	21.4	4.2	62.1	-3.4	
September	-10.4	-10.0	-30.0	-0.5	-48.5	-4.3	
October	-4.9	-5.8	14.9	-3.4	15.6	-16.0	
November	5.8	7.9	4.0	16.8	18.1	-4.1	
December	-12.1	-12.6	-1.4	-8.6	16.6	16.5	
January	-6.9	-4.7	-24.3	-7.9	-39.4	-7.0	
February	-0.5	2.4	34.0	5.5	17.9	-19.1	
March	22.8	21.0	2.4	21.9	13.9	19.9	
April	-26.0	-26.0	-11.2	-24.2	-15.1	-31.0	
May	22.1	22.7	-0.5	23.6	48.2	81.8	
June	12.5	13.1	14.8	20.6	-5.4	21.9	
1995 - 96 -							
July	-8.5	-9.4	-11.1	-17.5	n.y.a.	-13.7	

PUBLICATIONS SOURCE INDEX

1	<i>Australian National Accounts: State Accounts</i> (5242.0) Quarterly
2	<i>International Merchandise Trade, Australia</i> (5422.0) Quarterly
3	<i>Retail Trade, Australia</i> (8501.0) Monthly
4	<i>New Motor Vehicles Registrations, Australia, Preliminary</i> (9301.0) Monthly
5	<i>Tourist Accommodation, Australia</i> (8635.0) Quarterly
6	<i>State Estimates of Private New Capital Expenditure</i> (5646.0) Quarterly
7	<i>Building Approvals, Australia</i> (8731.0) Monthly
8	<i>Building Activity, Australia</i> (8752.0.40.001) Quarterly
8a	<i>Building Activity, Australia : Dwelling Unit Commencements, Preliminary</i> (8750.0) Quarterly
9	<i>Engineering Construction Activity, Australia</i> (8762.0.40.001) Quarterly
10	<i>Manufacturing Production, Australia, Preliminary</i> (8301.0) Monthly
11	<i>Livestock Products, Australia</i> (7215.0) Monthly
12	<i>Actual and Expected Private Mineral Exploration, Australia</i> (8412.0) Quarterly
13	<i>Consumer Price Index</i> (6401.0) Quarterly
14	<i>Price Index of Materials Used in House Building, Six State Capital Cities and Canberra</i> (6408.0) Monthly
15	<i>Price Index of Materials Used in Building Other Than House Building, Six State Capital Cities and Canberra</i> (6407.0) Monthly
16	<i>House Price Indexes: Eight Capital Cities</i> (6416.0) Quarterly
17	<i>Australian Demographic Statistics</i> (3101.0) Quarterly
18	<i>The Labour Force, Australia, Preliminary</i> (6202.0) Monthly
19	<i>Job Vacancies and Overtime, Australia</i> (6354.0) Quarterly
20	<i>Industrial Disputes, Australia</i> (6321.0) Monthly
21	Unpublished overseas arrival and departure statistics on microfiche
22	<i>Average Weekly Earnings, States and Australia</i> (6302.0) Quarterly
23	<i>Award Rates of Pay Indexes, Australia</i> (6312.0) Monthly
24	<i>Housing Finance for Owner Occupation, Australia</i> (5609.0) Monthly
25	Unpublished statistics available from PC AUSSTATS
26	<i>Reserve Bank of Australia Bulletin</i>

ABS PUBLICATIONS AND PRODUCTS

Statistics collected by the ABS are generally made available to clients in published form. Some, including those not published, are available in one or more of the following forms: microfiche, magnetic tape, computer printout, CD, floppy disk, photocopy and clerically extracted tabulation.

Current publications produced by the ABS are listed in the *Catalogue of Publications and Products, Australia* (1101.0). The ABS also issues on Tuesdays and Fridays a *Release Advice* (1105.0) which lists publications to be released within the next few days. The *Catalogue and Publications Advice* are available from any ABS Office.

To receive ABS publications on a regular basis contact the *ABS Publication Mailing Service* on (008) 02 0608.

A large range of data is available via on-line services, diskette, magnetic tape, tape cartridge and CD ROM. For more details about our electronic data services, contact any ABS Office.

The *ABS Information Consultancy Service* has specialist staff to assist and advise clients with their statistical inquiries. For more detailed information

about these services call at the ABS, 55 Currie Street, Adelaide, telephone the Information Officer on (08) 237 7100, or write to Information Service, ABS, GPO Box 2272, Adelaide 5001.

The ABS also provides a *Statistical Consultancy Service*, for expert assistance in survey, sample and questionnaire design, data collection, processing and analysis, and statistical modelling. For more information contact Gary Niedorfer, telephone (08) 237 7379.

SYMBOLS AND OTHER USAGES

n.a.	not available
n.y.a.	not yet available
..	not applicable
0, 0.0	nil or rounded to zero

Where figures have been rounded, discrepancies may occur between sums of the component items and totals.



© Commonwealth of Australia 1995

Recommended retail price: \$12.00



2130740010958
ISSN 1039-8880